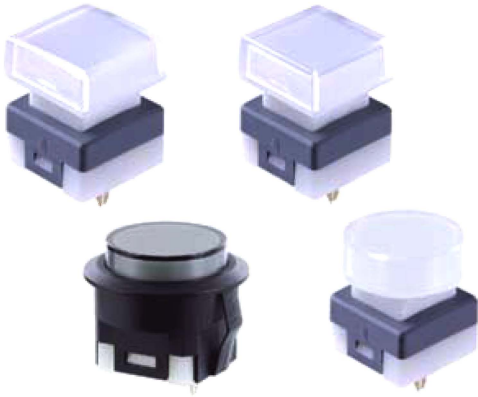


SPG4



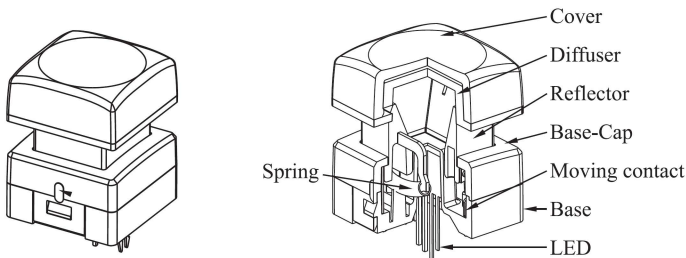
Specifications

Current Rating	:50mA
Voltage Rating	:48VDC
Contact Resistance	:100m Ohm (initial)
Insulation Resistance	:100M Ohm Min.
Operating Force	:250gf \pm 50gf
Total Travel	:4.5mm \pm 0.20mm
Mechanical Life	:5,000,000 cycles Min.
Solder Specifications	:260 deg. for 3 seconds
Function	:Momentary(SPST)
Operating Temperature	:-25 deg.~+70 deg.

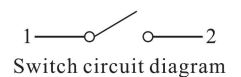
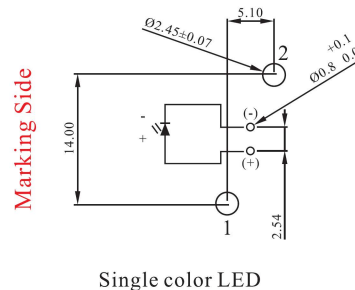
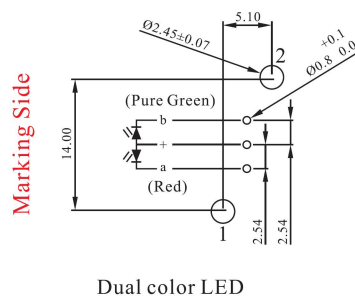
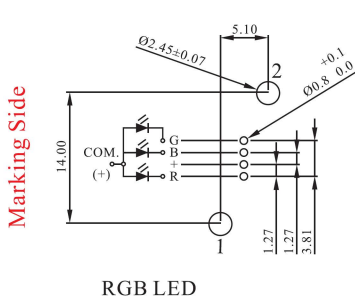
Materials

Cover	:Polycarbonate (PC)
Cap	:Polycarbonate (PC)
Reflector	:Polyoxymethylen (POM)
Base-Cap	:Polyamide (PA)
Moving contact	:Phosphor Bronze with gold plating
Base	:Polyamide (PA)
Terminal	:Brass with gold plating
Spring	:Piano wires
Rubber washer	:NBR

Drawing

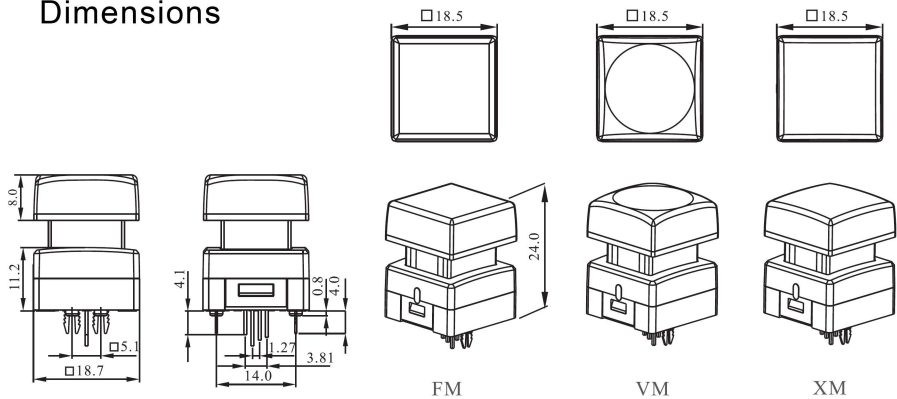


PCB Layout & Circuit Diagram

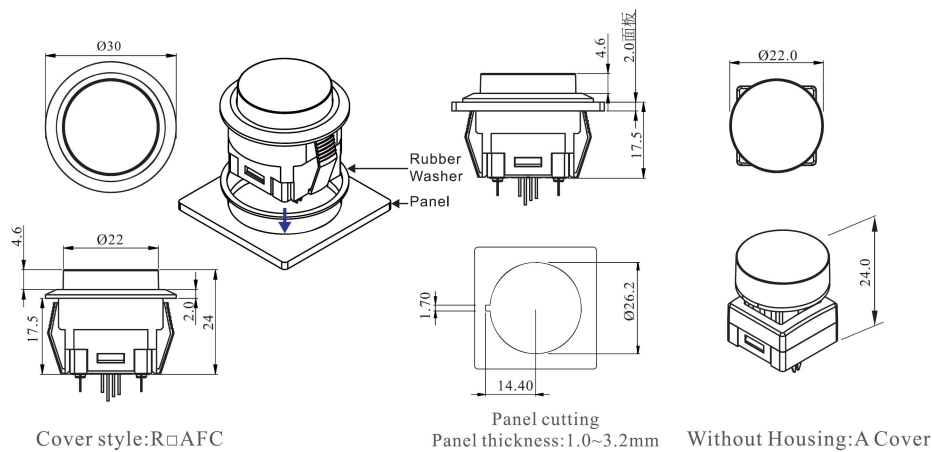


SPG4

■ Dimensions



■ Dimension of Round Cap (Snap-in type)



■ How to Order (18.5 cap)

