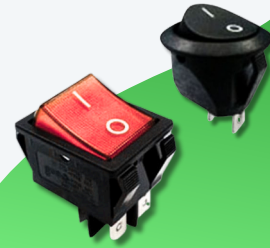




Buyers Guides :

## Rocker Switch Buying Guide:

How to Choose the Right Switch for Your Application



Rocker Switches are a popular choice for controlling power in a wide range of electronic devices. From industrial machines, automotive industries, to consumer electronics. But with so many configurations and features available, choosing the right Rocker switch can be challenging.

This guide will cover the key specifications and features to consider when purchasing Rocker Switches. Our Sales Engineers are on hand and ready to help with any other questions or advise.

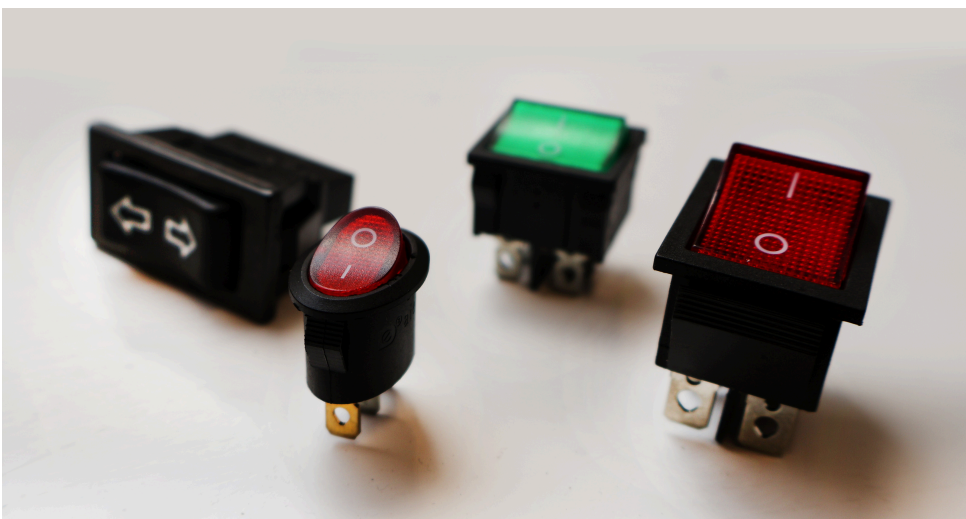


+44 (0) 1234 213600

[SALES@RJSELECTRONICS.COM](mailto:SALES@RJSELECTRONICS.COM)

### 1) Size

The first critical decision to make is the size of the Rocker Switch. This is determined by your panel cut out dimensions. It is important to also consider the space behind the panel to ensure the best option is considered from the space available.



## 2) Mounting Style

Common mounting types include;

**Snap-in Mount** – Quick and simple assembly, toolless installation.

**Screw Mount** – Secure fitting for more hard wearing devices.

## 3) Switching Options

These switches come in a wide variety of formats and styles, each offering unique advantages and limitations for different applications and types of devices. Here are some of the most common variants:

Switch Type	Explanation
On-off	A basic switch with two positions: on and off.
On-on	A switch with two "on" positions, allowing for toggling between two circuits.
Illuminated rocker	A rocker switch that lights up when in the "on" position for easy visibility in low light.
Power rocker	A robust switch designed to handle higher power loads, commonly used in appliances.
Changeover	A switch that changes the connection from one circuit to another.
Centre-off switch	A switch with three positions: on, off, and a middle "off" position acting as a neutral state.
On-NONE-Off / On-NONE-On	A switch with a stable "on" position and a momentary "off" or vice versa, for temporary disconnection.
Miniature rocker switch	A small-sized rocker switch, typically measured in millimetres, used in compact devices.

## 4) Switch Function

Rocker Switches have two types of functions **Momentary** and **Latching**. The standard function of most rocker switches is latching, but we can offer rockers with a momentary function, as well as with a 3-position configuration, instead of the typical 2-position type.

**Momentary:** Returns to original position when released.

**Latching (Maintained):** Stays in position until contact is made again.

## 5) IP Rating

This is important to consider, especially if your switch will be exposed to moisture, dust or even water. See our table below explaining IP ratings.

IP65	Dust tight, protected against water projected from a nozzle.
IP66	Dust tight and protected against powerful water jets.
IP67	Dust tight and protected from water immersion for 30 minutes between depths of 150mm – 1000mm.
IP68	Dust tight and protected against continuous water immersion.

💡 Try our **IP67 Illuminated Rocker Switches** for rugged environments, such as marine or industrial controls.

## 6) Circuit Configurations

This defines how the circuit is controlled, you can select the following options:

<b>SPST</b>	Single Pole Single Throw: Controls one circuit with one switch position.
<b>SPDT</b>	Single Pole Double Throw: Allows one circuit to be connected to one of two other circuits.
<b>DPDT</b>	Double Pole Double Throw: Controls two separate circuits, allowing each to connect to one of two other circuits.

## 7) Design

When selecting a Rocker Switch, design is an integral factor that influences both the functionality and aesthetics of your device. Firstly, the shape needs to be determined. The choice between these shapes depends on the overall design of your panel and expected design. For example, a rocker switch with a round shape, is often used for aesthetic or space-saving purposes.



Optional markings on the switch also play a crucial role in user interaction. Common markings include "ON" and "OFF" indicators, arrows, or symbols that denote specific functions. These markings not only enhance the usability of the switch by providing clear visual cues.

## 8) LED Illumination



LED illumination in rocker switches can significantly enhance both functionality and aesthetics. These illuminated switches provide a clear visual cue to indicate the switch's current state, which can be particularly useful in low-light environments. LED options include various colours such as red, blue, green, and amber, allowing for customisation to suit different applications or design preferences. Additionally, some models offer dual-colour LEDs, which can change colour based on the switch position, further enhancing visual feedback. Whether you're prioritising visibility, style, or functionality, incorporating LED illumination into your rocker switches can be an ideal solution for modern electronic designs.

## 9) Rocker Switch Series Available

<div>RJS1N1-22RL-XX-Y-BS-ZV-65P</div> <div></div>	<div>RJS20RCK-SPDT-101</div> <div></div>	<div>RJS20RCK-SPST-ONOFF</div> <div></div>	<div>RJS20RCK-SPST-DOT-X-24V</div> <div></div>
<div>R9</div> <div></div>	<div>R6</div> <div></div>	<div>R5</div> <div></div>	<div>R4</div> <div></div>
<div>3A Series</div> <div></div>	<div>3M Series</div> <div></div>	<div>4M Series</div> <div></div>	<div>4U Series</div> <div></div>



Interested in our products? Speak to us today!

# How to place an order?

We operate Monday – Thursday (8 am – 5 pm) and Fridays (8 am – 4.30 pm)

Call us on **+44 (0) 1234 213600** to speak to our Sales Engineers or e-mail us

on [sales@rjselectronics.com](mailto:sales@rjselectronics.com) alternatively, leave us a message using our [online contact form](#).

[View our full product range here](#) | [Download our recent product catalogue](#)