

30.5 × 30.5 × 40

Features	
▪ Stable electronic timing.	
▪ Wide operating voltage and temperature range.	
▪ Suitable for flash light during car turning.	

### Contact Data

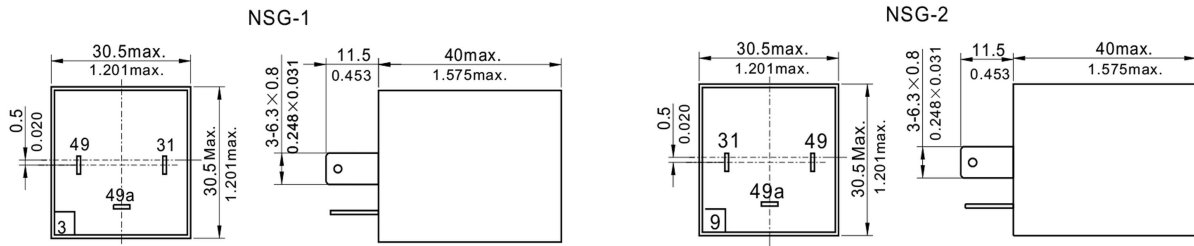
Rated voltage	12VDC, 24VDC
Operating voltage drop	<0.4VDC at rated turn signal load
Device voltage drop	<0.45VDC at rated hazard signal load
Initial turn-on	50ms
Sound pressure level	70dB
Upper limit temperature for the coil	125°C

### Characteristics

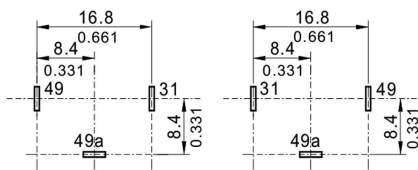
Contact Arrangement	1A (SPSTNO)		
Max output power	98W		
Shock Resistance	200m/s <sup>2</sup> 10ms Half sine wave pulse	IEC 68-2-27 Test Ea	
Vibration Resistance	10Hz~40Hz Double amplitude 1.27mm	IEC 68-2-6 Test Fc	
	40Hz~70Hz 50m/s <sup>2</sup>		
	70Hz~100Hz Double amplitude 0.5mm	IEC 68-2-6 Test Fc	
Drop test	Capable of meeting specifications		
	1m drop onto concrete	IEC 68-2-32 Test Ed method 1	
Contact data: Load requirements at 12.8VDC	Loads	2Lamp system	3Lamp system
	Turn signal mode: Rated loads Outage loads 2 × 21W	2 × 21W +1 × 5W +1 × 1.2W	3 × 21W +1 × 5W +1 × 1.2W
		1 × 21W +1 × 5W +1 × 1.2W	2 × 21W +1 × 5W +1 × 1.2W
Hazard mode: Rated loads	4 × 21W +2 × 5W +2 × 1.2W	6 × 21W +2 × 5W +2 × 1.2W	
Ambient temperature	-40°C~70°C		
Relative humidity	20%~50% at 23°C		
Mass	35g Approx		

## Dimensions

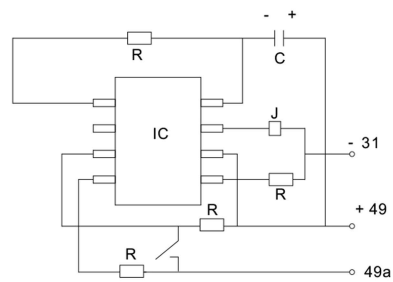
mm /inch



Dimensions



Mounting (Bottom view)



Wiring diagram

- NOTES 1).Dimensions are in millimeters.  
2).Inch equivalents are given for general information only.