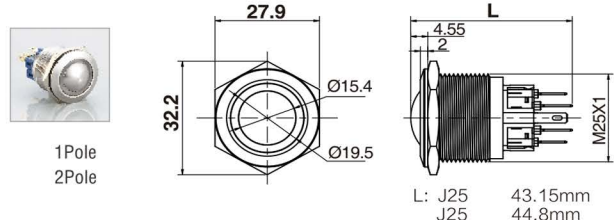
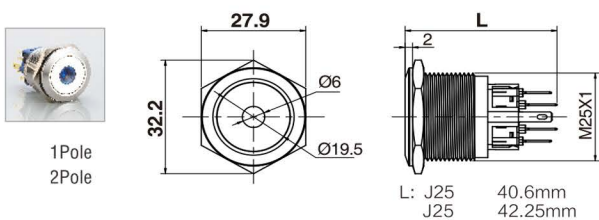
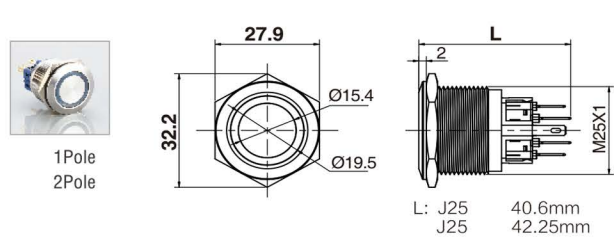
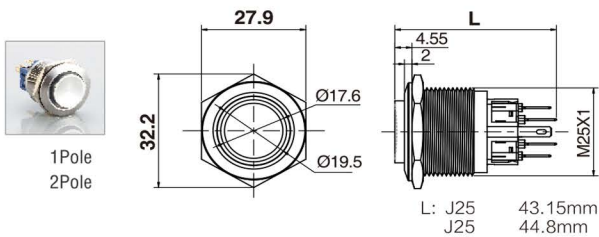


LED-Illuminated

Appearance	Part Number	Function	Contact	Colour	Voltage	Material			
	RJS103-25L-H-R~67J	Momentary	1NO+1NC	<ul style="list-style-type: none"> ■ Red ■ Green ■ Blue ■ White ■ Yellow ■ Orange 	24VDC 12VDC 6.3VDC 110VAC 220VAC	Stainless Steel Black Anodised Aluminium			
	RJS203-25L-H-R~67J		2NO+2NC						
	RJS103-25L(A)-H-R~67J	Latching	1NO+1NC						
	RJS203-25L(A)-H-R~67J		2NO+2NC						
	RJS103-25L-F-R~67J	Momentary	1NO+1NC						
	RJS203-25L-F-R~67J		2NO+2NC						
	RJS103-25L(A)-F-R~67J	Latching	1NO+1NC						
	RJS203-25L(A)-F-R~67J		2NO+2NC						
	RJS103-25L-F-D-67J	Momentary	1NO+1NC						
	RJS203-25L-F-D-67J		2NO+2NC						
	RJS103-25L(A)-F-D-67J	Latching	1NO+1NC						
	RJS203-25L(A)-F-D-67J		2NO+2NC						
	RJS103-25L-B-R~67J	Momentary	1NO+1NC						
	RJS203-25L-B-R~67J		2NO+2NC						
	RJS103-25L(A)-B-R~67J	Latching	1NO+1NC						
	RJS203-25L(A)-B-R~67J		2NO+2NC						

Drawings



■ Non-Illuminated

Appearance	Part Number	Function	Contact	Material
	RJS103-25-F~67J RJS203-25-F~67J	Momentary	1NO+1NC	Stainless Steel Black Anodised Aluminium
			2NO+2NC	
	RJS103-25(A)-F~67J RJS203-25(A)-F~67J	Latching	1NO+1NC	
			2NO+2NC	
	RJS103-25-H~67J RJS203-25-H~67J	Momentary	1NO+1NC	Stainless Steel Black Anodised Aluminium
			2NO+2NC	
	RJS103-25(A)-H~67J RJS203-25(A)-H~67J	Latching	1NO+1NC	
			2NO+2NC	
	RJS103-25-B~67J RJS203-25-B~67J	Momentary	1NO+1NC	Stainless Steel Black Anodised Aluminium
			2NO+2NC	
	RJS103-25(A)-B~67J RJS203-25(A)-B~67J	Latching	1NO+1NC	
			2NO+2NC	

■ Drawings

