




RJSPS16B Key Lock Switches

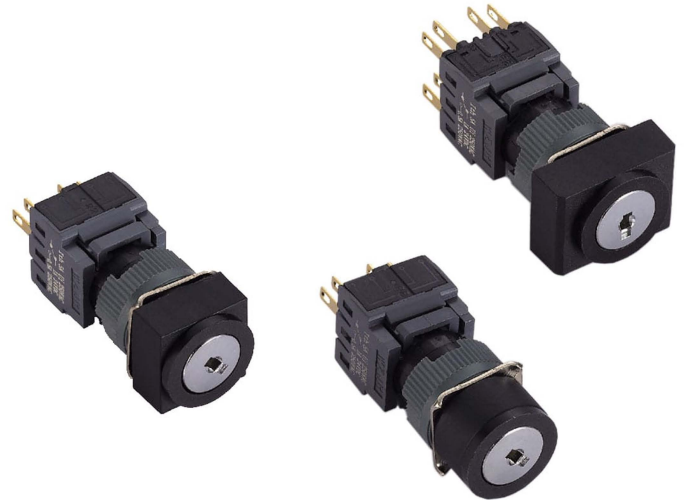
■ Related certification

Standard	signal
UL 508	
EN60947-1 EN60947-5-1	
GB 14048.5	



■ Specifications

Degree of Protection	IP 65 Watertight /Oiltight
Contact Configuration	Single Pole, Double Pole
Maximum Voltage	250V AC/DC
Thermal Current	5A
Minimum Applicable Load	5V AC/DC, 1mA
Contact Material	Gold-plated silver
Terminal Style	.110" Solder/Quick Connect
Operating Temperature	-25°C to +55°C
Operating Humidity	45 to 85% RH
Contact Resistance	50MΩ maximum
Insulation Resistance	100MΩ minimum (500V DC megger)
Vibration Resistance	10 to 55Hz, amplitude 1.2mm p-p
Degree of Protection	>10g
Electrical Life	100,000 operations minimum (at full rated load)
Mechanical Life	Maintained: 1,000,000 operations minimum Momentary: 1,000,000 operations minimum Selector /Keylock: 250, 000 operations minimum
Dielectric Strength	Switch Unit: 2,000V AC, 1min. between live/dead part and terminals of different poles; 1,000V AC, 1 minute between terminals of the same pole; 1,500V AC, 1 minute between contact and lamp terminals. Illumination Unit: 2,000V AC, 1min. between live Part/ground
Soldering Temperature	20W/5 Seconds or 260C/3 seconds



■ Features

- Installation diameter:16mm
- Degree of Protection: IP65
- Silver Plated of contact: 3 μ
- Compact design save space
- Momentary, Maintained, Selector and E-stops
- LED Super bright LED cold light source lamp display

■ Contact Ratings

Working voltage		24V	110V	220V
AC (50/60Hz)	Resistive	—	1.0A	0.5A
	Inductive	—	0.7A	0.5A
DC	Resistive	1.0A	0.2A	—
	Inductive	0.7A	0.1A	—

■ LED Ratings

Rated Voltage	Current
5V DC ± 5%	8mA
6V AC/DC(± 10%)	AC: A, R, W, Y: 8mA G, S: 7mA
	DC: A, R, W, Y: 6mA G, S: 5mA
12V AC/DC(± 10%)	AC: 9mA DC: 8mA
24V AC/DC(± 10%)	AC: 9mA DC: 8mA

RJSPS16B Key Lock Switches

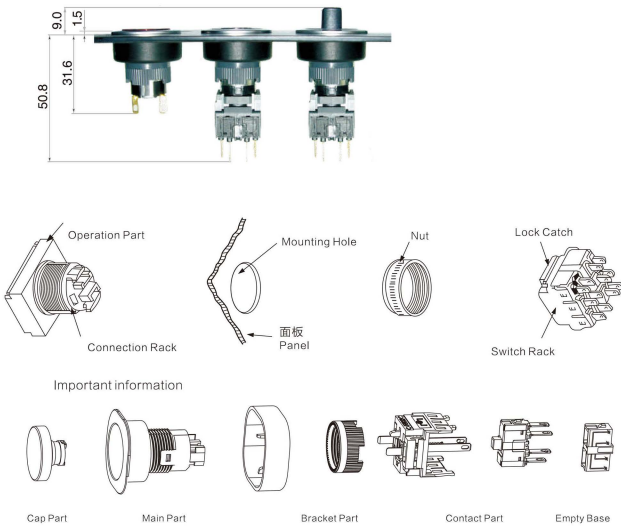
How to Order:

RJSPS16B —

Mounting Size	Operation Style	Operation Characteristic	Contact Structure	Selection Code
	4: Selector (2P) 5: Selector (3P) 6: Key Switch (2P) 7: Key Switch (3P)	1: Round 2: Square 3: Rectangular	0: Nil 1: SPDT(1a+1b) 2: DPDT(2a+2b) 3: TPDT(3a+3b)	Key out Positon Move way 2: 2 Positon Maintained 0: 2 Positon Momentary 3: 3 Positon Maintained 7: 3 Positon Right Momentary 6: 3 Positon Left Momentary 1: 3 Positon Both Momentary

Sort	Reset Style				Key out Positon						
	Maintained	Momentary									
3Positon											
Code	2	0			A	B		D			
3Positon											
Code	3	7	6	1	A	B	C	D	E	F	G

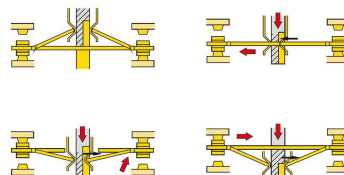
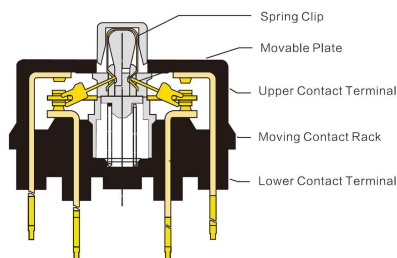
Selector/Key basic rotation angle 90°



Installation depth of other products is 42.5mm except for indicator lamp

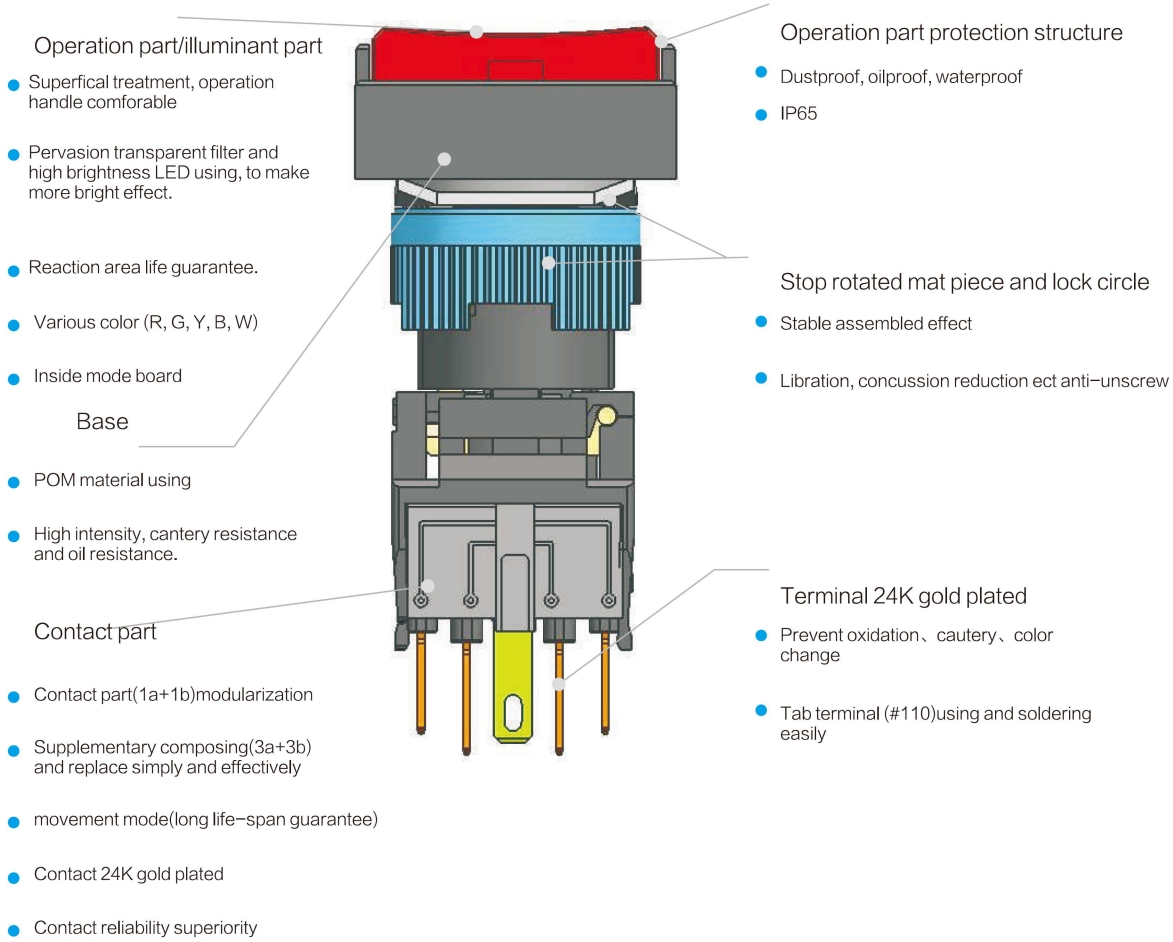
- In the lock state do not open the alternate type button, it could lead to internal structre damage.
- Easily rotate choose Switch and Key Switch can, operation do not excessive force (1 N.m above)
- Installation of us 22M16, please pay attention to install board can't more than cover the biggest 2.6mm. waterproof cover the biggest 2.0mm, the largest ring 1mm.
- When installation, please use the special spanner, appropriate imprison torque to 0.6-1 N.m
- Welding operations, pay attention to the following:
 - 1) Soldering pen for 30W power below.
 - 2) Solder must bring gum rosin solder wire.
 - 3) Welding duration when 30W 5 seconds, when 20W within 10 Seconds.

Contact Structure Chart

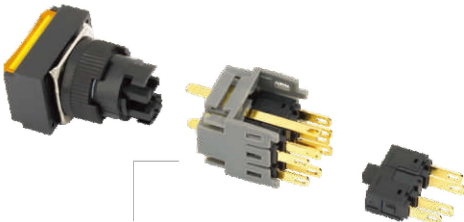


RJSPS16B Key Lock Switches

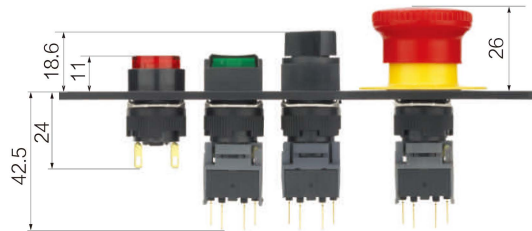
■ Features



■ Assembly / Installation Depth



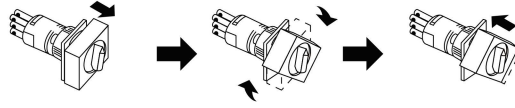
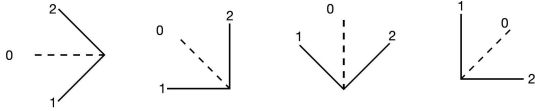
The switch rack is marked with the polarity of indicator lamp terminal . Press the upper and lower lock catches of switch rack , to disassemble the switch rack conveniently. The inching components can be assembled or changed



Installation depth of other products is 42.5mm except for indicator lamp

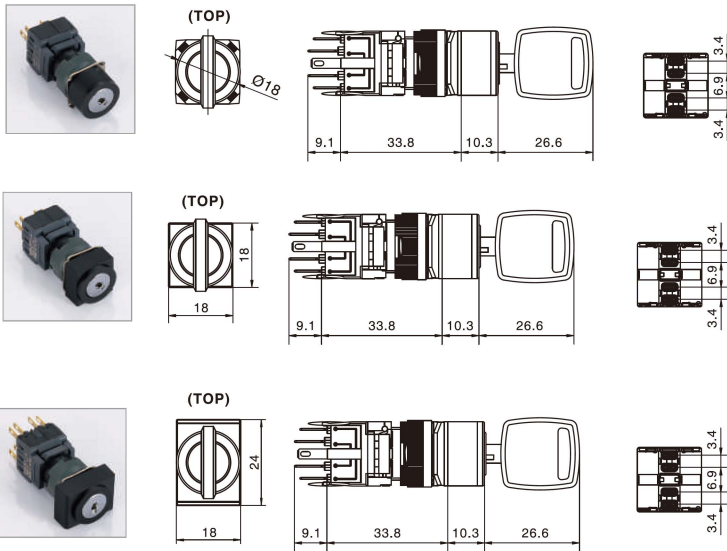
RJSPS16B Key Lock Switches

■ Key Lock Switches Position / Assembly

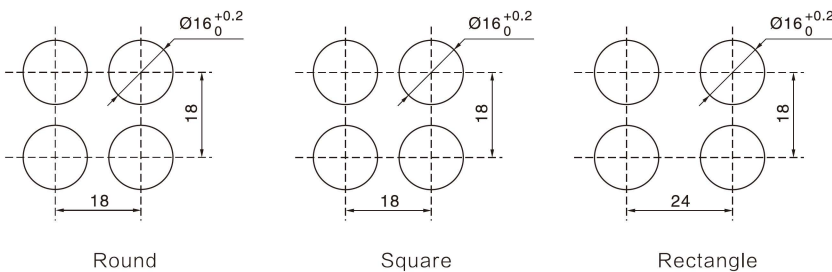


Selector and Key Switch Handle Position

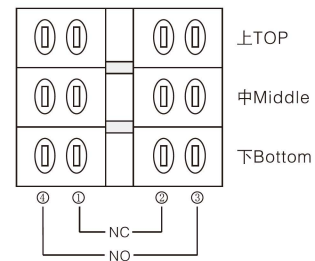
Operation		Contact	↙	↑	↗
90° 2 2 Position	Maintained 	SPDT			
	Momentary 	DPDT			
90° 3 3 Position	Maintained 	TPDT			
	Left lock Right reset 				
	Left reset Right lock 				
	Momentary 				



□ Installation size



□ Terminal style



- As shown at right, the base of product to be seen as front side, which show terminal disposition and inside coil drawing.
- Product assemble contact 1C(1a+1b), if needed, Please appoint to add at least 3C(1a+1b)