

# RJSPS16A SERIES

LED ILLUMINATED BUZZER



## Specifications

Degree of Protection	IP 65 Watertight /Oiltight
Contact Configuration	Single Pole, Double Pole
Maximum Voltage	250V AC/DC
Thermal Current	5A
Minimum Applicable Load	5V AC/DC, 1mA
Contact Material	Gold-plated silver
Terminal Style	.110" Solder/Quick Connect
Operating Temperature	-25°C to +55°C
Operating Humidity	45 to 85% RH
Contact Resistance	50M $\Omega$ maximum
Insulation Resistance	100M $\Omega$ minimum (500V DC megger)
Vibration Resistance	10 to 55Hz, amplitude 1.2mm p-p
Degree of Protection	>10g
Electrical Life	100,000 operations minimum (at full rated load)
Mechanical Life	Maintained: 1,000,000 operations minimum Momentary: 1,000,000 operations minimum Selecotr /Keylock: 250,000 operations minimum
Dielectric Strength	Switch Unit: 2,000V AC, 1min. between live/dead part and terminals of different poles; 1,000V AC, 1 minute between terminals of the same pole; 1,500V AC, 1 minute between contact and lamp terminals. Illumination Unit: 2,000V AC, 1min. between live Part/ground
Soldering Temperature	20W/5 Seconds or 260C/3 seconds

## Contact Ratings

Working voltage		24V	110V	220V
AC (50/60Hz)	Resistive	—	1.0A	0.5A
	Inductive	—	0.7A	0.5A
DC	Resistive	1.0A	0.2A	—
	Inductive	0.7A	0.1A	—

## LED Ratings

Rated Voltage	Current
5V DC $\pm$ 5%	8mA AC: A, R, W, Y: 8mA G, S: 7mA
6V AC/DC ( $\pm$ 10%)	DC: A, R, W, Y: 6mA G, S: 5mA
12V AC/DC ( $\pm$ 10%)	AC: 9mA    DC: 8mA
24V AC/DC ( $\pm$ 10%)	AC: 9mA    DC: 8mA

## How to Order

RJSPS16A -



Operation  
Characteristic

Round  
Rectangular



Lamp Style

Basic  
Red LED



Voice style

Continuous  
Discontinuous







Voltage

6.3VDC  
12VDC  
24VDC  
110VDC  
220VDC

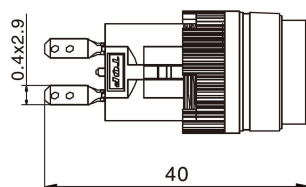
# RJSPS16A SERIES

LED ILLUMINATED BUZZER

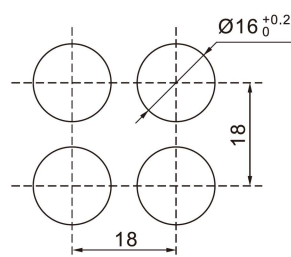


Product appearance	Illuminated type	Model
<p>Round</p>  	Without LED	RJSPS16A Round Buzzer
	With LED	RJSPS16A Round Buzzer with LED
<p>Rectangle</p>  	Without LED	RJSPS16A Rectangular Buzzer
	With LED	RJSPS16A Rectangular Buzzer with LED

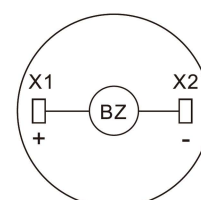
Round



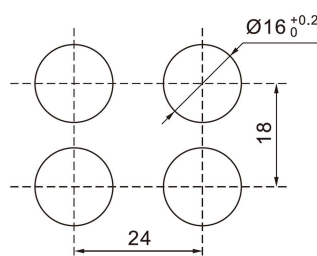
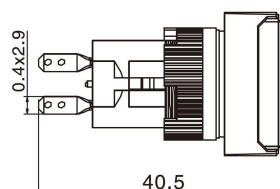
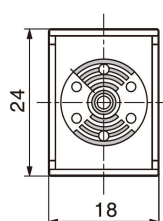
□ Buzzer Installation size



Contacts circuit



Rectangle



Rectangle