



## ■ Features

- Installation diameter: 16mm
- Degree of Protection: IP65
- Silver Plated of contact: 3 μ
- Compact design saves space
- Shade UV
- LED  
Super bright LED cold light source lamp display

## Selector Switches

### ■ Related certification

Standard	Signal	
UL 508		UL Recognized File No. E307512
EN60947-1 EN60947-5-1		
GB 14048.5		

### ■ Specifications

Degree of Protection	IP 65 Watertight /Oiltight
Contact Configuration	Single Pole, Double Pole
Maximum Voltage	250V AC/DC
Thermal Current	5A
Minimum Applicable Load	5V AC/DC, 1mA
Contact Material	Gold-plated silver
Terminal Style	.110" Solder/Quick Connect
Operating Temperature	-25°C to +55°C
Operating Humidity	45 to 85% RH
Contact Resistance	50MΩ maximum
Insulation Resistance	100MΩ minimum (500V DC megger)
Vibration Resistance	10 to 55Hz, amplitude 1.2mm p-p
Degree of Protection	>10g
Electrical Life	100,000 operations minimum (at full rated load)
Mechanical Life	Maintained: 1,000,000 operations minimum Momentary: 1,000,000 operations minimum Selector /Keylock: 250,000 operations minimum
Dielectric Strength	Switch Unit: 2,000V AC, 1min. between live/dead part and terminals of different poles; 1,000V AC, 1 minute between terminals of the same pole; 1,500V AC, 1 minute between contact and lamp terminals. Illumination Unit: 2,000V AC, 1min. between live Part/ground
Soldering Temperature	20W/5 Seconds or 260C/3 seconds

### ■ Contact Ratings

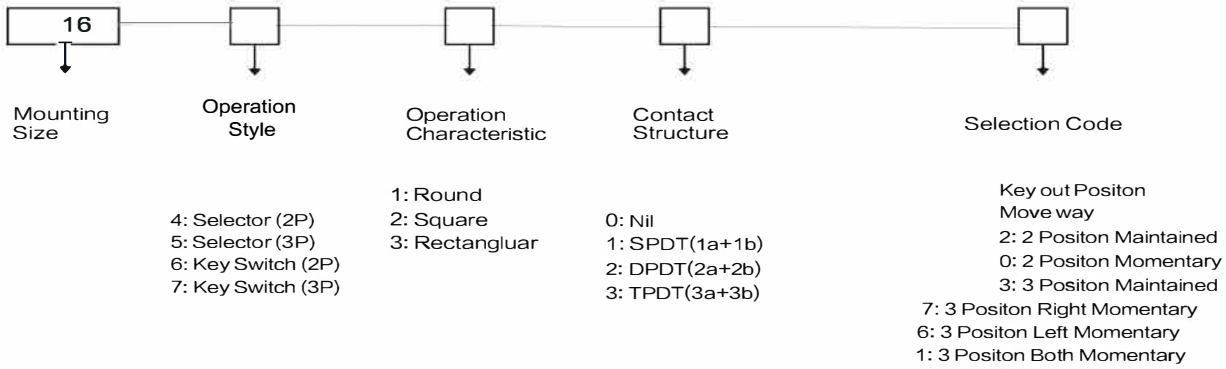
Working voltage		24V	110V	220V
AC (50/60Hz)	Resistive	—	1.0A	0.5A
	Inductive	—	0.7A	0.5A
DC	Resistive	1.0A	0.2A	—
	Inductive	0.7A	0.1A	—

### ■ LED/ LED Ratings

#### ■ Rated Voltage 5V DC ±5%

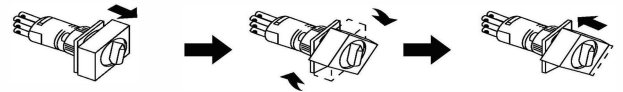
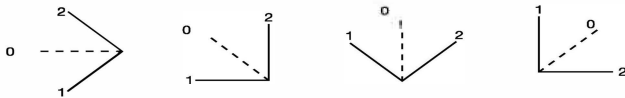
Rated Voltage	Current
6V AC/DC (± 10%)	8mA AC: A, R, W, Y: 8mA G, S: 7mA DC: A, R, W, Y: 6mA G, S: 5mA
12V AC/DC (± 10%)	AC: 9mA DC: 8mA
24V AC/DC (± 10%)	AC: 9mA DC: 8mA

## Selector and Key Switch Select Code



Sort	Reset Style			Key out Positon							
	Maintained	Momentary									
3Positon											
Code	2	0		A	B		D				
3Positon											
Code	3	7	6	1	A	B	C	D	E	F	G

90° Selector/Key basic rotation angle 90°

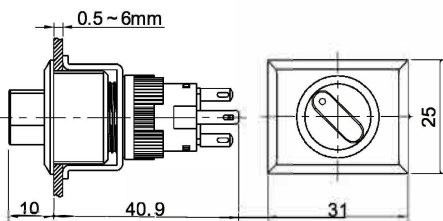
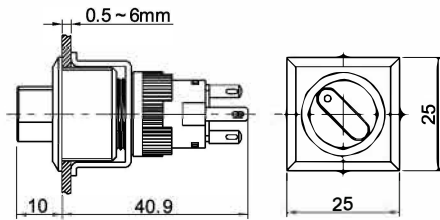
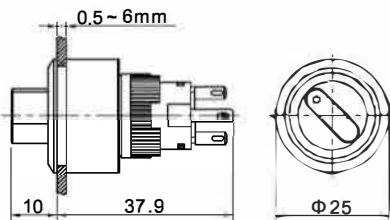
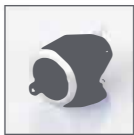


## Non - Illuminated

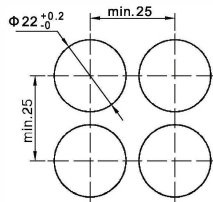
Product appearance	Operation		Contact
<b>Round</b>  	90° 2 2 Postion	Maintained	SPDT
		Momentary	SPDT
		Maintained	DPDT
		Momentary	DPDT
	90° 3位 3 Postion	Maintained	DPDT
		Left lock Right reset	DPDT
		Left reset Right lock	DPDT
		Momentary	DPDT
<b>Square</b>  	90° 2 2 Postion	Maintained	SPDT
		Momentary	SPDT
		Maintained	DPDT
		Momentary	DPDT
	90° 3 3 Postion	Maintained	DPDT
		Left lock Right reset	DPDT
		Left reset Right lock	DPDT
		Momentary	DPDT
<b>Rectangle</b>  	90° 2 2 Postion	Maintained	SPDT
		Momentary	SPDT
		Maintained	DPDT
		Momentary	DPDT
	90° 3 3 Postion	Maintained	DPDT
		Left lock Right reset	DPDT
		Left reset Right lock	DPDT
		Momentary	DPDT

## ■ Selector Switches - Non - Illuminated

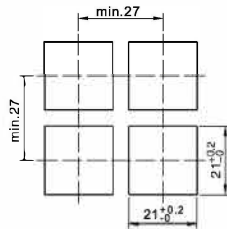
operations				Contact			
90° 2 2 Positon			Maintained	SPDT			
			Momentary		DPDT		
90° 3 3 Positon			Maintained	TPDT			
			Left lock Right reset				
			Left reset Right lock				
			Momentary				



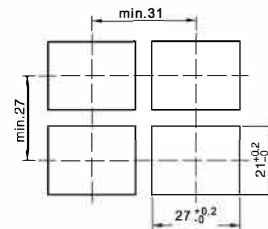
## ■ Installation size



Round



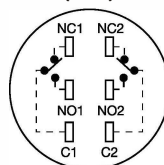
Square



Rectangle

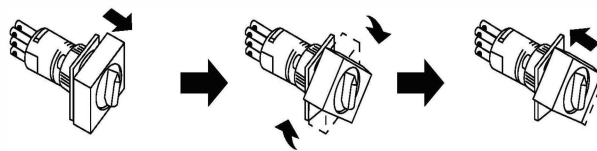
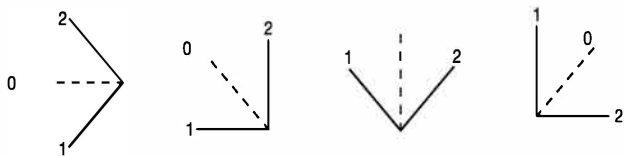
## ■ Terminal style

Push Button  
(TOP)



# RJSPS1622A

■ Selector Switch - LED illuminated



Product appearance

Operation

Contact

Top Color

Rated Voltage

Round



90° 2 2 Position		Maintained	SPDT
		Momentary	SPDT
		Maintained	DPDT
		Momentary	DPDT
90° 3 3 Position		Maintained	DPDT
		Left lock Right reset	DPDT
		Left reset Right lock	DPDT
		Momentary	DPDT

- Red
- Green
- Yellow
- White
- Blue

- D:24VDC
- E:12VDC
- F:6.3VDC
- A1:110VAC
- A2:220VAC

Square



90° 2 2 Position		Maintained	SPDT
		Momentary	SPDT
		Maintained	DPDT
90° 3 3 Position		Momentary	DPDT
		Maintained	DPDT
		Left lock Right reset	DPDT
		Left reset Right lock	DPDT
		Momentary	DPDT

- Red
- Green
- Yellow
- White
- Blue

- D:24VDC
- E:12VDC
- F:6.3VDC
- A1:110VAC
- A2:220VAC

Rectangle



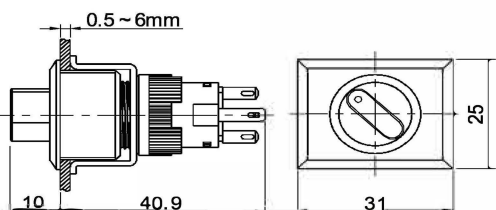
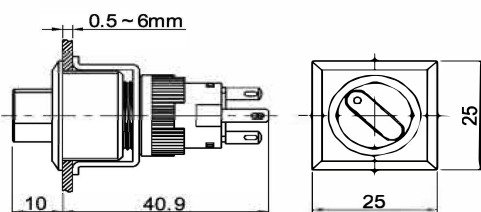
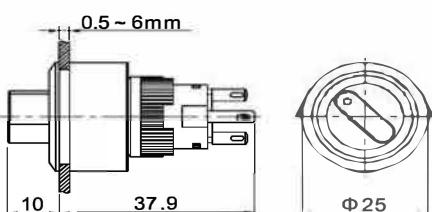
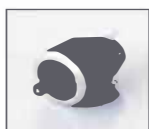
90° 2 2 Position		Maintained	SPDT
		Momentary	SPDT
		Maintained	DPDT
90° 3 3 Position		Momentary	DPDT
		Maintained	DPDT
		Left lock Right reset	DPDT
		Left reset Right lock	DPDT
		Momentary	DPDT

- Red
- Green
- Yellow
- White
- Blue

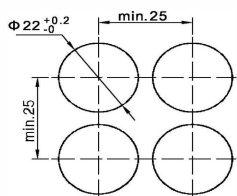
- D:24VDC
- E:12VDC
- F:6.3VDC
- A1:110VAC
- A2:220VAC

## ■ Selector Switch - LED illuminated

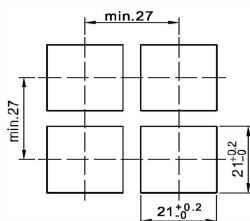
Operation		Contact		
		↙	↑	↗
90° 2 2 Position	Maintained 	SPDT 		NO NC 
	Momentary 	DPDT 		NO NC NO NC 
90° 3 3 Position	Maintained 	TPDT 	NO NC NO NC 	NO NC NO NC 
	Left Lock Right rest 			
	Left reset Right lock 			
	Momentary 			



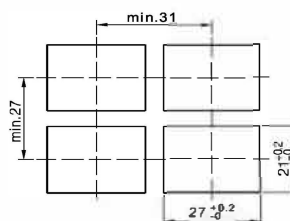
## ■ Installation size



Round



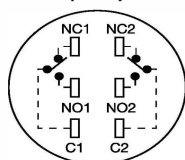
Square



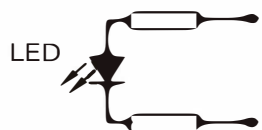
Rectangle

## ■ Terminal style

Push Button  
(TOP)



## ■ LED Circuit



12VDC, 24VDC, 110VAC, 220VAC for 12VDC, 24VDC, 110VAC, 220VAC