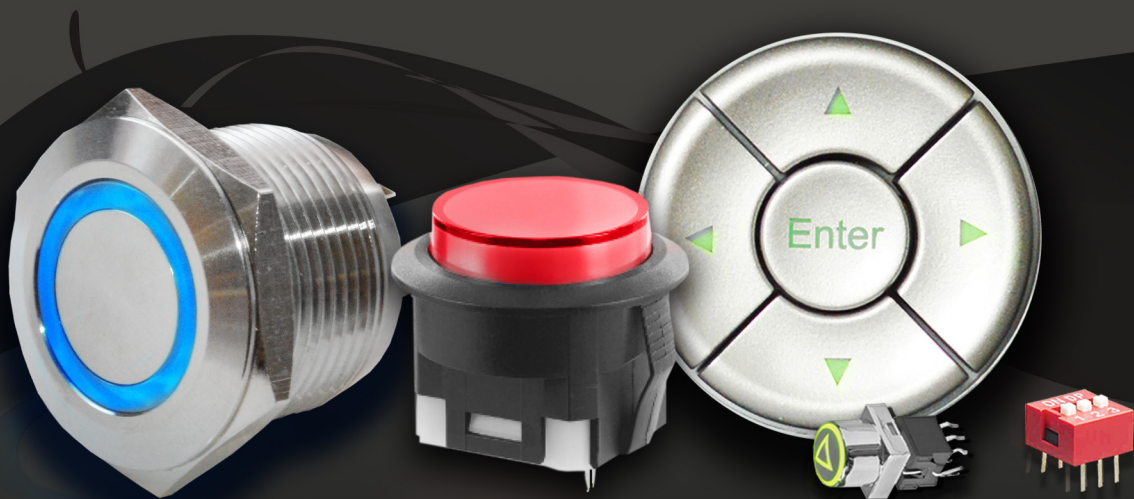


The logo for RJS Electronics Limited features the letters 'RJS' in a bold, white, sans-serif font. To the left of the letters is a stylized circular arrow graphic composed of two curved segments, one red and one green, forming a clockwise loop.

# RJS Electronics Limited

SWITCHES | RELAYS | DISPLAYS

CATALOGUE



# HISTORY

TRADING SINCE  
**2003**

## RJS ELECTRONICS LTD

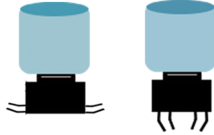
RJS Electronics Ltd is centrally located in Bedford, UK.  
We specialise in supporting Electronic design companies  
through to manufacturers worldwide.

## OUR RANGES

We offer a wide range of PCB & Panel Mount components such as Switches, Relays,  
LED's/Indicators, LCD Displays & Cable Assemblies.

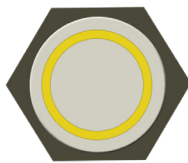
Our products feature in a wide range of markets such as Lighting, Broadcast,  
Security, Automotive, Control Panels, Military & Emergency Services.

# CONTENTS



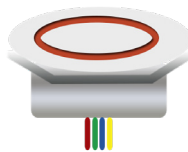
## PCB SWITCHES

PAGE 1- 6



## PANEL MOUNT

PAGE 7- 18



## TOUCH SENSITIVE

PAGE 19- 20



## NAVIGATION

PAGE 21- 24



## RELAYS

PAGE 25-26



# PCB SWITCHES

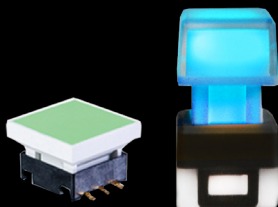
Comprehensive range of PCB switches including non-illuminated and LED illuminated options



RGB AVAILABLE



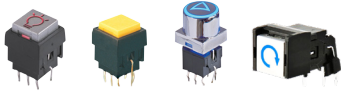
CUSTOM CAPS AND LEGENDS



TACTILE & SILENT SWITCHES



## PB613



- "Through hole"
- Momentary / Latching
- Silent / Tactile click
- Single / Bi colour LED illumination
- Vertical / Right angle

## PB614



- "Through hole" / SMT mount
- Momentary with tactile click
- Single / Bi-colour LED illumination

## PB615



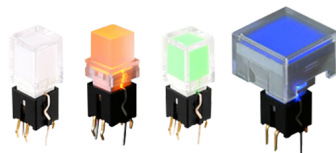
- "Through hole" / SMT mount
- Momentary with click
- Single / Bi-colour / RGB LED illumination
- Vertical / Right angle

## PB617/PB627



- "Through hole" / SMT mounting style
- Momentary / Latching
- Silent / Tactile click
- Single / Bi-colour LED illumination

## SPH



- "Through hole"
- Momentary with tactile click
- Single LED illumination

## KC



- "Through hole"
- Momentary
- Silent / Tactile click
- Single / Dual LED illumination

## SPA



- "Through hole"
- Momentary / Latching
- Silent / Tactile click
- Single / Bi-colour LED illumination

## KS01



- "Through hole"
- Momentary with tactile click
- Single / Bi-colour LED illumination

## TC011



- "Through hole"
- Momentary with tactile click
- Single / Bi-colour / RGB LED illumination

## CUSTOMISATION



Custom cap and LED options

## TC013



- "Through hole"
- Momentary with tactile click
- Single / Bi-colour LED illumination

## TC018



IP67 SEALED SWITCH

- "Through hole"
- Momentary with tactile click
- Single / Bi-colour LED illumination

## SPK



IP67 SEALED SWITCH

- "Through hole" / Panel mount
- Momentary silent
- Single / Bi-colour / RGB LED illumination
- Rubberised cap and body

## SPG 1&2



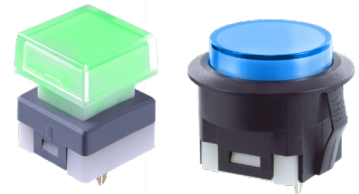
- "Through hole"
- Momentary
- Silent / With click
- Single / Dual / RGB LED illumination
- 12mm, 15mm & 17.4mm
- 17.4mm x 34.8mm rectangle

## SPG 3



- "Through hole"
- Momentary silent
- Single / Dual / RGB LED illumination
- 12mm

## SPG 4



- "Through hole" / Panel mount
- Momentary
- Silent / With click
- Single / Dual / RGB LED illumination
- 18.5mm

## SPG 5



- "Through hole"
- Momentary silent
- Single / Dual / RGB LED illumination
- 15.2mm cap size

## PS011A



- "Through hole"
- Momentary silent
- Single / Dual / RGB LED illumination
- 10mm, 12mm, 15mm & 17.4mm

## KA/K2/K9



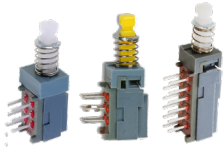
- "Through hole" | SMT Travel
- Momentary | Silent / With click
- Single / Dual / RGB LED illumination
- KA - 12mm, 15mm & 17.4mm square cap
- K2 - 12mm and 15mm square cap
- K9 - 9mm square cap

## CUSTOMISATION



Custom caps available

## PS909



- “Through hole”
- DPDT / 4PDT / 6PDT
- Momentary / Latching
- Tactile click
- Right angle

## ML



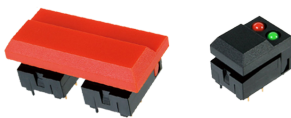
- “Through hole”
- DPDT / 4PDT
- Momentary / Latching
- Tactile click
- Single / Bi-colour LED illumination
- Right angle

## SPJ



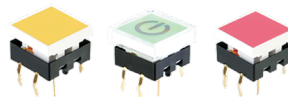
- “Through hole” / SMT mount
- Momentary with click
- Single / Bi-colour LED illumination
- Right angle

## SP86



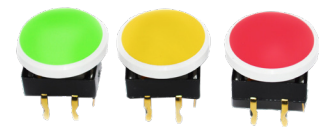
- “Through hole” | Rocker switch
- Momentary / Latching
- Tactile click
- Single / Dual LED illumination
- Single / Double width caps

## SPL12



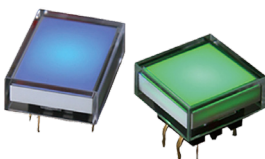
- “Through hole”
- 12mm
- Momentary with tactile click
- Single / Bi-colour LED illumination

## SPL15



- “Through hole”
- 15mm ø
- Momentary with tactile click
- Single / Bi-colour LED illumination

## SPL16



- “Through hole”
- 16mm
- Momentary with tactile click
- Single / Bi-colour LED illumination

## SPD



- “Through hole”
- 12mm
- Momentary with tactile click
- Single / Bi-colour / RGB LED illumination

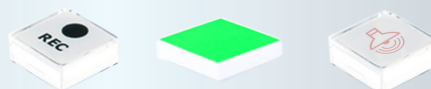
## SPDG



LOW PROFILE

- “Through hole” / SMT mount
- 15mm, 17mm & 22mm round
- Momentary with tactile click
- Single / Bi-colour / RGB LED illumination

## CUSTOMISATION



Custom caps available

### 3A/3M



- Miniature rocker switch
- Contact rating available up to 5A

### 4A/4B/4M/4U



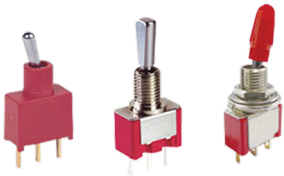
- Miniature rocker switch
- Contact rating available up to 3A
- Available with mounting bracket

### Panel Rockers



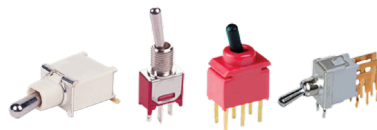
- Rocker switch
- With / Without LED
- High current ratings available

### 1A/1F/1M



- Sealed miniature toggle switch
- Contact rating available up to 5A
- Water-proof sealing

### 2B/2M/2U/2T



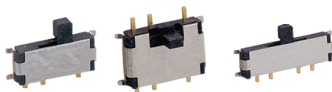
- Sub-miniature toggle switch
- Contact rating available up to 3A
- 2B- SMT toggle switch

### Dip switches



- Vertical / Right-angled mount
- Used for a variety of applications
- Alternative to jumper blocks

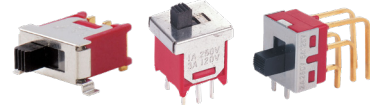
## Slide Switches



- "Through hole" / SMT / Vertical / Right angled mount
- Standard size / Miniature / Sub-Miniature



- Solder Lug / PCB pin terminals

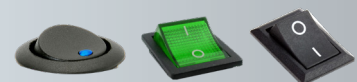


- Various circuits available such as SPST / SPDT / DPDT / SP3T

## CUSTOMISATION



Cover options for Toggle Switches



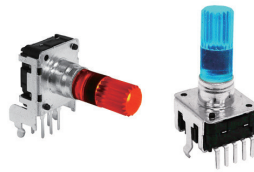
Custom LED and etching for Rockers

## Rotary Encoders



- "Through hole"
- Size: 8mm - 20mm
- Knurled or D (Flat) shaft
- Vertical / Right angle

## LED Encoders



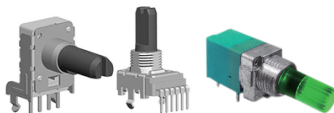
- "Through hole"
- Size: 12mm
- LED transparent hollow shaft
- Single / Dual / RGB LED illumination
- Vertical / Right angle

## SMT Encoders



- SMT mounting style
- Size: 11mm
- Knurled or D (Flat) shaft

## Rotary Pots



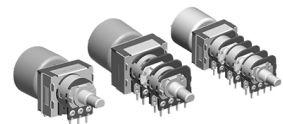
- "Through hole"
- Size: 6mm - 27mm
- Knurled or D (Flat) shaft
- From single to 4 gang
- Vertical / Right angle

## Slide Pots



- Variety of mounting styles available
- Size: 4mm - 100mm
- PCB or solder lug type
- Single / Dual unit

## Motorised Pots



- Options to Save 'presets'
- Size: 60 - 100mm
- Used on mixer desks and other applications

## Tact Switches



- PCB Tact switch



- "Through hole" / Surface mount



- Variety of caps available

## ACCESSORIES



Variety of Pots & Encoder caps available



# METAL SWITCHES

8mm to 40mm inclusive range of metal switches with Stainless and Anodised Finishes



RGB AVAILABLE

CUSTOM FINISHES



WIRING AVAILABLE

## RJS-8



- SPST
- Flat / Domed / Ball head
- Momentary
- IP65 when used with O-Ring

## RJS-10



- SPDT
- High head
- Momentary / Latching
- IP67 when used with O-Ring

## RJS-10L



- SPDT
- High head
- Momentary / Latching
- Single / Bi-colour LED illumination
- IP67 when used with O-Ring

## RJS-12 Long



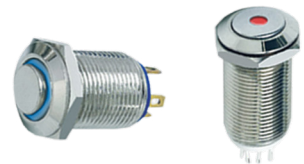
- SPST | Long body
- Flat / High / Ball head
- Momentary / Latching
- IP67 when used with O-Ring

## RJS-12 Short



- SPST | Short body
- Flat / High / Ball head
- Momentary
- IP65 when used with O-Ring

## RJS-12L



- SPST
- Flat / High / Ball head
- Momentary
- Single / Bi-colour LED illumination
- Short body IP65 / Long body IP67

## RJS-12T



INTERNALLY RESISTED

- SPST | Short body
- Ball head / Domed
- Momentary
- IP65 when used with O-Ring

## RJSP12M



- SPST
- Momentary
- Single LED illumination
- IP67

## RJSP12L

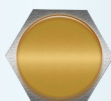


- SPST
- Latching
- Single LED illumination
- IP67

## CUSTOMISATION



Brushed Steel



Brass



Anodised Aluminium





### RJS1N1S-16



- SPST | Screw terminals
- Flat / High / Ball head
- Momentary
- IP67 when used with O-Ring

### RJS1N1-16L



- SPST
- Flat / High / Ball head
- Momentary
- Single / Bi-colour / RGB LED illumination
- IP67 when used with O-Ring

### RJS102-16PL



- SPST
- Flat / High head
- Momentary
- Single LED illumination
- Plastic material
- IP67 when used with O-Ring

### RJS102-16-Q



- SPDT
- Flat / High head
- Momentary / Latching
- Single / Bi-colour LED illuminated
- IP67 when used with O-Ring

### RJS102-16-J



- SPDT
- Flat / High head
- Momentary / Latching
- Single / Bi-colour LED illuminated
- IP67 when used with O-Ring

### RJS202-16



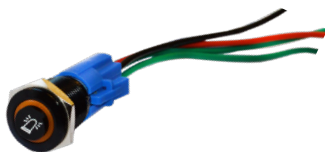
- DPDT
- Flat / High head
- Momentary / Latching
- Single / Bi-colour LED illuminated
- IP67 when used with O-Ring

### RJS102P-16



- SPDT
- Flat / High head
- Momentary / Latching
- Single / Bi-colour LED illumination
- IP67 when used with O-Ring
- Terminals for use with plug

### RJS102P-16-CON



- Connector for 16mm switch

### RJS102-19-CON



- Connector for 19mm switch

## CUSTOMISATION



Custom LED options





## RJS101-19



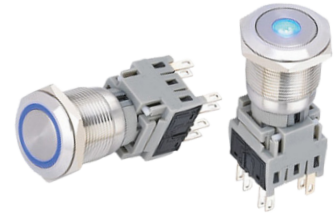
- SPDT
- Flat / High head
- Momentary / Latching
- Single / Bi-colour LED illumination
- IP67 when used with O-Ring

## RJSX02-19



- SPDT / DPDT
- Flat / High head
- Momentary / Latching
- Single / Bi-colour / RGB LED illumination
- IP67 when used with O-Ring

## RJSX04-19



- SPDT / DPDT / 3PDT
- Flat head
- Momentary / Latching
- Single / Bi-colour LED illumination
- IP65 when used with O-Ring

## RJS1N1-19



- SPST | Tag terminals
- Flat / High / Ball head
- Momentary
- Single / Bi-colour LED illumination
- IP65 when used with O-Ring

## RJS1N1-19M



- SPST | Tag terminals
- Flat / High / Ball head
- Momentary
- Single / Bi-colour LED illumination
- IP65 / IP67 when used with O-Ring

**MICRO-TRAVEL**

## RJS1N1S-19



- SPST | Screw terminals
- Flat / High / Ball head
- Momentary
- IP65 when used with O-Ring

## RJS1N1S-19L-B



- SPST | Screw terminals
- Domed
- Momentary
- Single / Bi-colour LED illumination
- IP65 when used with O-Ring

## RJS106-19



- SPST / SPDT
- Flat head
- Momentary / Latching
- Single / Bi-colour LED illumination
- IP65 / IP67 when used with O-Ring

**UP TO 20A**

## RJS1N1P-19



- SPST
- Flat Head
- Momentary / Latching
- Single LED illumination
- IP65 when used with O-Ring

**SHORT BODY WITH LATCHING FUNCTION**

## CUSTOMISATION



Flat / Ball / High head options

RJS1N1S-22L



- SPDT | Screw terminals
- Flat / High / Ball head
- Momentary
- Single / Bi-colour LED illumination
- IP65 when used with O-Ring

RJS1N1-22L



- SPST | Tag terminals
- Flat / High / Ball head
- Momentary
- Single / Bi-colour LED illumination
- IP65 when used with O-Ring

RJS103-22L



- SPDT
- Flat / High head
- Momentary / Latching
- Single / Bi-colour / RGB LED illumination
- IP65 / IP67 when used with O-Ring

RJS103-22-CON



- Connector for 22mm switch

RJSMQ-22



MICRO-TRAVEL

- SPST
- Ball head
- Momentary
- IP65 when used with O-Ring

RJS102-22M



DUAL COLOUR

- SPDT
- Flat / High head
- Momentary
- Single / Dual LED illumination
- IP67 when used with O-Ring

RJSMQ-25



LOW PROFILE

- SPST
- Ball head
- Momentary
- IP65 when used with O-Ring

RJS103-25



- DPDT
- Flat head
- Momentary / Latching
- Single / Bi-colour / RGB LED illumination
- IP67 when used with O-Ring

RJS103-25-CON



- Connector for 25mm switch

## CUSTOMISATION



Custom wiring available



RJS-28L



- SPDT / DPDT
- Flat / High head
- Momentary / Latching
- Single / Bi-colour / RGB LED illumination
- IP65 / IP67 when used with O-Ring

RJS103-28



- SPDT / DPDT
- Flat / High head
- Momentary / Latching
- IP65 / IP67 when used with O-Ring

RJS103-28LF

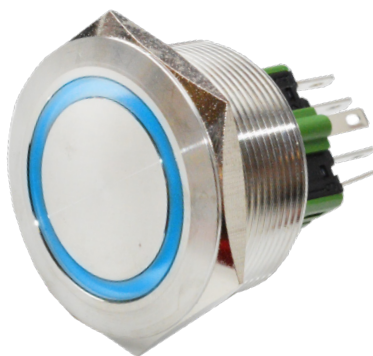


LARGE FACE

- SPDT / DPDT
- Flat / High head
- Momentary / Latching
- IP65 / IP67 when used with O-Ring

RJS-30L

- SPDT / DPDT
- Flat / High head
- Momentary/Latching
- Single / Bi-colour / RGB LED
- IP65 / IP67 when used with O-Ring



RJS-30



RJS-40L

LARGEST SIZE

- SPDT / DPDT
- Flat / High head
- Momentary / Latching
- Single / Bi-colour / RGB LED
- IP65 / IP67 when used with O-Ring



RJS-40

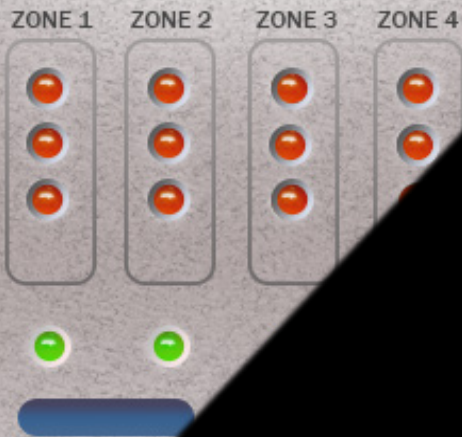


## CUSTOMISATION



Custom LED options

## FIRE ALARM CONTROL PANEL



# METAL INDICATORS

6mm to 30mm types with different face options



RGB AVAILABLE



CUSTOM FINISHES

WIRING AVAILABLE

## RJS-6I



- 6mm Metal Indicator
- Flush / Raised / Domed
- Single / Bi-colour LED illumination
- 3V- 220V LED as standard

## RJS-8I



- 8mm Metal Indicator
- Flush / Raised / Domed
- Single / Bi-colour / RGB LED illumination
- 3V- 220V LED as standard

## RJS-12I



- 12mm Metal Indicator
- Flush / Raised / Domed
- Single / Bi-colour / RGB LED illumination
- 3V- 220V LED as standard

## RJS-16I



- 16mm Metal Indicator
- Flush / Raised / Domed
- Single / Bi-colour / RGB LED illumination
- 3V- 220V LED as standard

## RJS-19I



- 19mm Metal Indicator
- Flush / Raised / Domed
- Single / Bi-colour / RGB LED illumination
- 3V- 220V LED as standard

## RJS-22I



- 22mm Metal Indicator
- Flush / Raised / Domed
- Single / Bi-colour / RGB LED illumination
- 3V- 220V LED as standard

## RJS-25I



- 25mm Metal Indicator
- Flush / Raised / Domed
- Single / Bi-colour / RGB LED illumination
- 3V- 220V LED as standard

## RJS-28I



- 28mm Metal Indicator
- Flush / Raised / Domed
- Single / Bi-colour / RGB LED illumination
- 3V- 220V LED as standard

## RJS-30I



- 30mm Metal Indicator
- Flush / Raised / Domed
- Single / Bi-colour / RGB LED illumination
- 3V- 220V LED as standard

## CUSTOMISATION



wiring available



Custom finishes and LED options





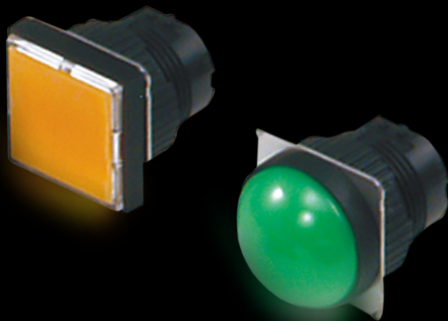
# PLASTIC SWITCHES

Vast range from 8mm to 22mm variants,  
Square, Round and Rectangular

DURABLE PLASTIC



LIGHT PRESS



CUSTOM OPTIONS

## SPCG



- 15mm, 17mm & 22mm
- "Through hole" / Panel mount style
- Raised / Flush
- Momentary / Latching
- Single / Bi-colour / RGB LED illumination

## RJSPS8A



- 8mm panel cut out
- Round / Square / Rectangular actuator
- Single / Bi-colour LED illumination

## RJSPS10A



- 10mm panel cut out
- Round / Square / Rectangular actuator
- Single / Bi-colour LED illumination

## RJSPS12A



- 12mm panel cut out
- Round / Square / Rectangular actuator
- Single / Bi-colour LED illumination

## RJSPS16A



- 16mm panel cut out
- Round / Square / Rectangular actuator
- Single / Bi-colour LED illumination

## RJSPS1622A



- 16mm / 22mm panel cut out
- Round / Square / Rectangular actuator
- Single / Bi-colour LED illumination

## RJSPS1622A



- 22mm panel cut out
- Round actuator
- Single LED illumination

## RJSPS16B



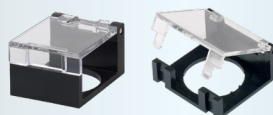
- Emergency stop switch
- 16mm panel cut-out
- Round/square/rectangular actuator
- Higher rated contacts than K16

## RJSAS30E

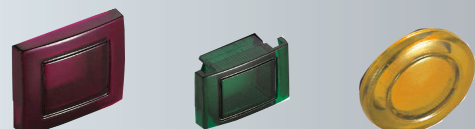


- Emergency stop switch
- 22mm panel cut out
- Mushroom, Round actuator

## CUSTOMISATION



Guards available



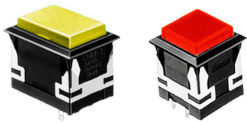
Various cap options

## Plastic Selector Switches



- Plastic Selector switches
- With / Without LED illumination
- Custom finishes available
- Multi-Position

CH



- Cap Size: 13.2mm square type  
13.2 x 19.4mm rectangular type
- Full-Face / Split-Face / Dual-Colour LED illumination
- Built-in resistor for 5V - 24V

EH



- Cap Size: 14.2mm square  
14.2x20.4mm rectangular
- Momentary / Latching
- Single / Bi-colour LED illumination

FH



- Cap size: 11.4mm square  
11.4x16.4mm rectangular
- Full Face and Spot display type
- Built-in resistor for 5V- 24V

KH



- Cap size: 14.2mm square  
14.2mm x 20.4mm rectangular
- Single / Bi-colour LED illumination  
(Full-face / split-face / dual-colour / spot)

WH



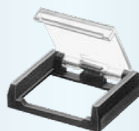
- Cap size: 25 round / 19mm square  
19mm x 26mm rectangular
- Single / Bi-colour LED illumination  
(Full-face / split-face / dual-colour / spot)

XH



- Cap Size: 19mm square  
19mm x 26mm rectangular
- Single / Bi-colour LED illumination  
(Full-face / split-face / dual-colour / spot)

## CUSTOMISATION



Guard

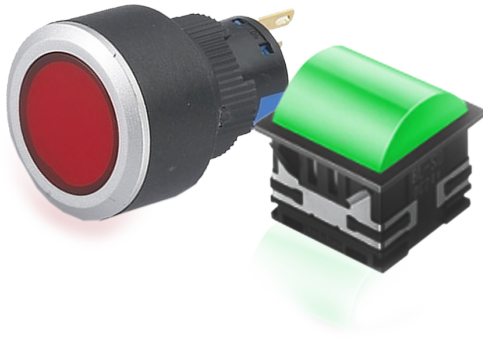


Socket



Barrier





# PLASTIC INDICATORS

Vast range of plastic Indicators;  
Square, Round and Rectangular

## RJSPS16A



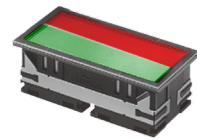
- 16mm Plastic Indicator
- Flush / Raised / Domed
- Single / Bi-colour LED illumination
- 3V- 24V LED as standard

## RJSPS1622A



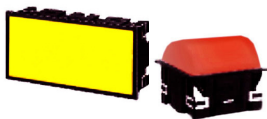
- 16 / 22mm Plastic Indicator
- Flush / Raised / Domed
- Single / Bi-colour LED illumination
- 3V- 24V LED as standard

## BL



- 30 x 30mm or 30 x 62mm LED Indicator
- Depth behind panel only 20mm
- 30mm Square / 30 x 62mm Rectangular
- LED Full-face / Split-Face / Dual Colour

## CL



- 40 x 40mm or 40 x 80mm LED Indicator
- Depth behind panel only 20mm
- LED Full-face, Split-Face or Dual-Colour

## ML



- 30mm Square / Round LED Indicator
- Depth behind panel only 29mm
- 25mm diameter round hole mounting
- Mono Colour / Dual Colour

## 3L



- 30mm square / 30 X 62mm rectangular
- Depth behind panel only 28mm
- Various LED options

## CUSTOMISATION



Custom caps for RJSPS Series



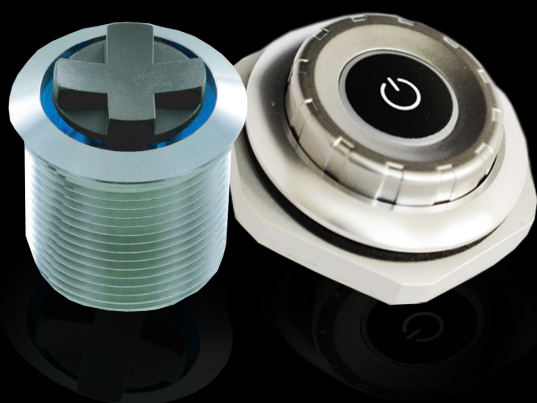
VOL 0000000000  
IF 0000000000  
RT 0000000000  
RTR: FM - TOD  
IN 0000000000  
MODE 0000000000

# NAVIGATION

Full range of Navigation modules including rotary encoder option

PANEL/PCB COMPONENTS

MULTI MENU FUNCTIONS



SNAP IN EASY INSTALLATION

## SNA1



- 5-way switch
- SP5T
- Momentary
- Custom laser cut legends for LED symbols

## SNA2



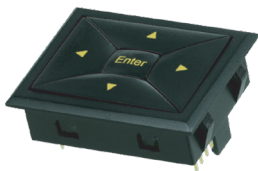
- Large single button switch
- SPST
- Momentary
- Custom laser cut legends for LED symbols

## SNA3



- Large 3-way switch
- SP3T
- Momentary
- Custom laser cut legends for LED symbols

## SNA4



- Rectangular 5-way switch
- SP5T
- Momentary
- Custom laser cut legends for LED symbols

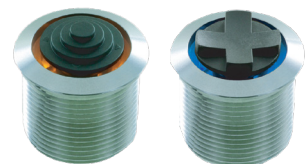
## SF25WA



IP67 SEALED

- 5-way Navigation module
- SP5T
- Momentary
- Custom laser cut legends for LED symbols

## SF19BA



- 4-way joystick
- SP5T
- Momentary
- Centre tactile button
- LED backlight

## SF39BA



- 5-way switch
- SP5T
- Momentary
- Custom laser cut legends for LED symbols

## SF39EA



- Rotary Encoder switch with centre button
- SPST | 12 pulse
- Number of detents: 24
- Flush actuator

## SF39EB



- Rotary Encoder switch with centre button
- SPST | 12 pulse
- Number of detents: 24
- Raised actuator

## CUSTOMISATION



START



Custom legends available

## SPD5K2



- 5x SPD switches mounted on a PCB
- SP5T
- Momentary
- Custom laser cut legends for LED symbols

## SF42EA



- 5-way Rotary switch
- SP5T | 12 pulse
- Number of detents: 24
- Flush actuator only

## PB61412



- "Through hole"
- Momentary with tactile click
- Single / Bi-colour LED illumination

## PB613



- "Through hole"
- Momentary / Latching
- Silent / Tactile click
- Single / Bi colour LED illumination
- Vertical / Right angle

## PB614



- "Through hole" / SMT mount
- Momentary with click
- Single / Bi-colour LED illumination

## PB615



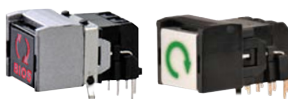
- "Through hole" / SMT mount
- Momentary with tactile click
- Single / Bi-colour / RGB LED illumination
- Vertical / Right angle

## PB6151



- "Through hole"
- Momentary with tactile click
- Single / Bi-colour / RGB LED illumination

## PB613RF



- "Through hole"
- Momentary / Latching
- Tactile click
- Right angle
- Single / Bi colour LED illumination

## PB6131RFIL



- "Through hole"
- Momentary / Latching
- Tactile click
- Single / Bi colour LED illumination
- Double Layer

## CUSTOMISATION



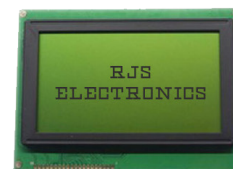
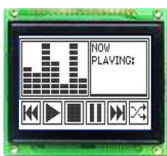
Custom caps available

## LCD Character Displays



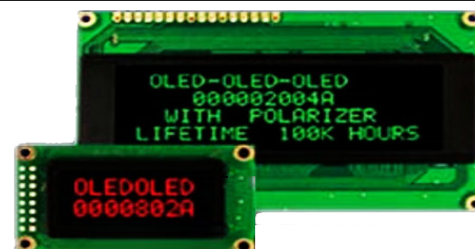
- Available in the following sizes: 8x1, 8x2, 16x1, 16x2, 16x4, 20x01, 20x02, 20x04, 24x02, 40x1, 40x2, 40x4
- Different colour LED backlight available
- Top or bottom viewing angles

## LCD Graphic Displays



- Available in the following pixel sizes: 122x32, 128x64, 240x64, 128x128, 250x128
- Different colour LED backlight available
- Top or bottom viewing angles

## OLED Displays



- Super clear OLED displays use organic LED technology
- Available in standard sizes to replace existing STN LCD modules
- 08x02 OLED mini display up to 20x04 or 40x02 Character display 50x16, 76x16, 100x8, 100x16, 100x32, 200x16, 96x64, 128x32, 128x64, 132x32 and 256x64 OLED graphic displays

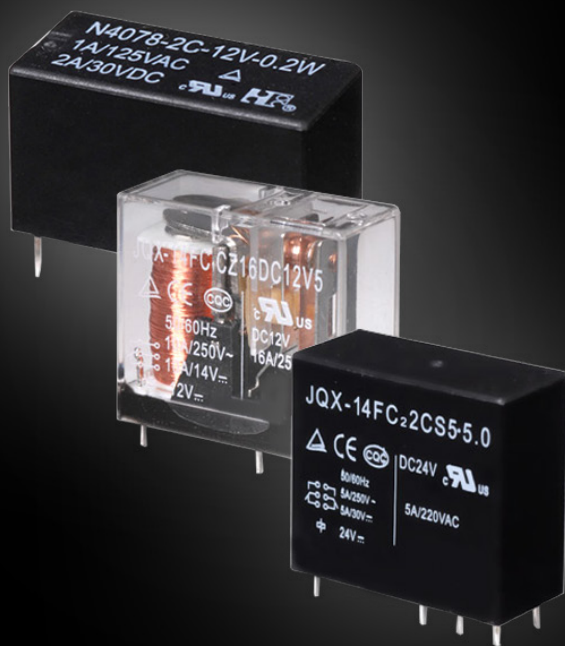
More options available on our website



# RELAYS

Industrial, Automotive, Telecom Relays to cover most applications

PCB / SOCKET MOUNT TYPE



LATCHING & MOMENTARY

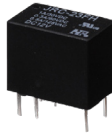
VARIOUS HIGH COIL RATINGS

## JRC-19F



- Standard 21 × 10 × 12mm
- Max voltage: 30VDC 220VAC
- Small size, light weight
- Low coil power consumption

## JRC-23F



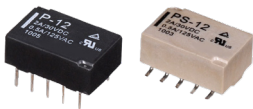
- Standard 12.5 × 7.5 × 10mm
- Max voltage: 60VDC 125VAC
- Low coil power consumption
- High sensitivity

## M4



- Standard 20 × 10 × 12mm
- Max voltage: 220VDC 250VAC
- DIL Pitch Terminals, High Sensitivity
- High Reliability

## P5/P12/P24



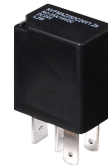
- Standard- 14 × 9 × 5mm
- SMT- 14 × 9 × 5.3mm
- Max voltage: 220VDC 250VAC
- Max current: 2A

## NVF



- Standard 20 × 15.3 × 22.5mm
- Max voltage: 75VDC
- Switching capacity up to 25A
- Suitable for automation & automobile

## NVFM



- Standard 23 × 15.5 × 26mm
- Max voltage: 75VDC
- Switching capacity up to 35A
- Suitable for automation & automobile

## NT73



- Standard 19.5 × 16.5 × 16.5 mm
- Max voltage 110VDC 380VAC
- Small size, light weight
- Low price reliable quality

## NT75



- Standard 29 × 12.7 × 15.7mm
- Max voltage 125VDC 440VAC
- Small size, light weight
- Switching capacity up to 20A

## JQX



- Standard 29 × 12.8 × 26mm.
- Max voltage: 110VDC 380VAC
- Up to 5000VAC dielectric strength
- Suitable for heavy power reverse

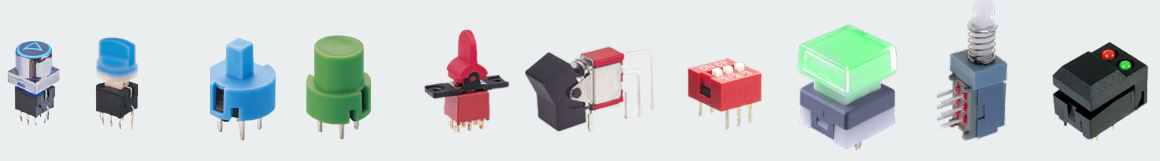
## ACCESSORIES



Sockets available



## PCB SWITCHES



## PANEL MOUNT



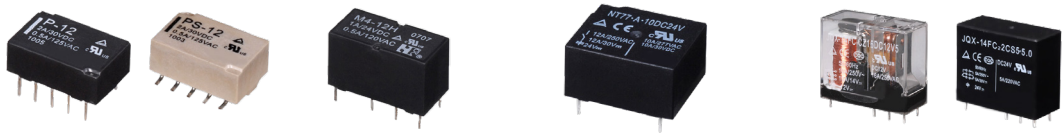
## TOUCH SENSITIVE



## NAVIGATION



## RELAYS







Tel: +44 (0) 1234 213600    [sales@rjselectronics.com](mailto:sales@rjselectronics.com)    [www.rjselectronics.com](http://www.rjselectronics.com)



#### ADDRESS

49 Mill Street  
Bedford  
MK40 3EU  
United Kingdom

#### CONTACT

[www.rjselectronics.com](http://www.rjselectronics.com)  
[sales@rjselectronics.com](mailto:sales@rjselectronics.com)  
+44 (0) 1234 213600