



RJS Electronics Limited

SWITCHES | RELAYS | DISPLAYS

CATALOGUE



HISTORY

TRADING SINCE

2003

RJS ELECTRONICS LTD

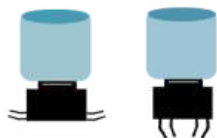
RJS Electronics Ltd is centrally located in Bedford, UK.
We specialise in supporting Electronic design companies
through to manufacturers worldwide.

OUR RANGES

We offer a wide range of PCB & Panel Mount components such as Switches, Relays,
LED's/Indicators, LCD Displays & Cable Assemblies.

Our products feature in a wide range of markets such as Lighting, Broadcast,
Security, Automotive, Control Panels, Military & Emergency Services.

CONTENTS



PCB SWITCHES

PAGE 1- 6



PANEL MOUNT

PAGE 7- 18



TOUCH SENSITIVE

PAGE 19- 20



NAVIGATION

PAGE 21- 24



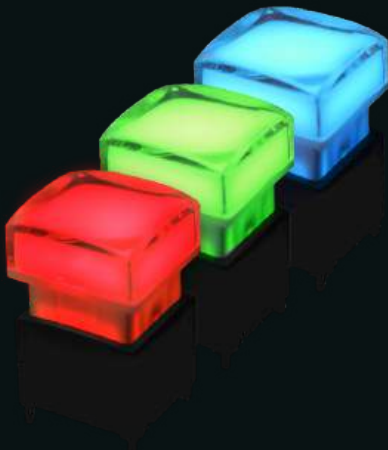
RELAYS

PAGE 25-26



PCB SWITCHES

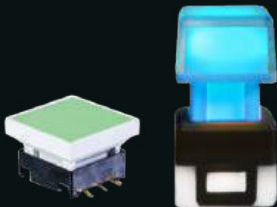
Comprehensive range of PCB switches including non-illuminated and LED illuminated options



RGB AVAILABLE



CUSTOM CAPS AND LEGENDS



TACTILE & SILENT SWITCHES

PB613



- “Through hole”
- Momentary / Latching
- Silent / Tactile click
- Single / Bi colour LED illumination
- Vertical / Right angle

PB614



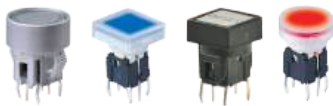
- “Through hole” / SMT mount
- Momentary with tactile click
- Single / Bi-colour LED illumination

PB615



- “Through hole” / SMT mount
- Momentary with click
- Single / Bi-colour / RGB LED illumination
- Vertical / Right angle

PB617/PB627



- “Through hole” / SMT mounting style
- Momentary / Latching
- Silent / Tactile click
- Single / Bi-colour LED illumination

SPH



- “Through hole”
- Momentary with tactile click
- Single LED illumination

KC



- “Through hole”
- Momentary
- Silent / Tactile click
- Single / Dual LED illumination

SPA



- “Through hole”
- Momentary / Latching
- Silent / Tactile click
- Single / Bi-colour LED illumination

KSO1



- “Through hole”
- Momentary with tactile click
- Single / Bi-colour LED illumination

TC011



- “Through hole”
- Momentary with tactile click
- Single / Bi-colour / RGB LED illumination

CUSTOMISATION



Custom cap and LED options

TC013



- “Through hole”
- Momentary with tactile click
- Single / Bi-colour LED illumination

TC018



IP67 SEALED SWITCH

- “Through hole”
- Momentary with tactile click
- Single / Bi-colour LED illumination

SPK



IP67 SEALED SWITCH

- “Through hole” / Panel mount
- Momentary silent
- Single / Bi-colour / RGB LED illumination
- Rubberised cap and body

SPG 1&2



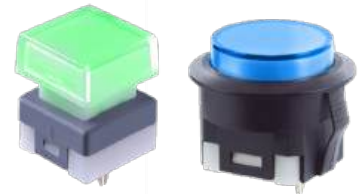
- “Through hole”
- Momentary
- Silent / With click
- Single / Dual / RGB LED illumination
- 12mm, 15mm & 17.4mm
- 17.4mm x 34.8mm rectangle

SPG 3



- “Through hole”
- Momentary silent
- Single / Dual / RGB LED illumination
- 12mm

SPG 4



- “Through hole” / Panel mount
- Momentary
- Silent / With click
- Single / Dual / RGB LED illumination
- 18.5mm

SPG 5



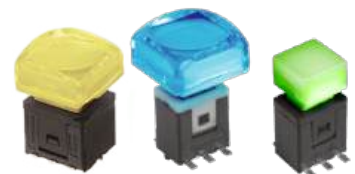
- “Through hole”
- Momentary silent
- Single / Dual / RGB LED illumination
- 15.2mm cap size

PS011A



- “Through hole”
- Momentary silent
- Single / Dual / RGB LED illumination
- 10mm, 12mm, 15mm & 17.4mm

KA/K2/K9



- “Through hole” | SMT Travel
- Momentary | Silent / With click
- Single / Dual / RGB LED illumination
- KA - 12mm, 15mm & 17.4mm square cap
- K2 - 12mm and 15mm square cap
- K9 - 9mm square cap

CUSTOMISATION



Custom caps available

PS909



- “Through hole”
- DPDT / 4PDT / 6PDT
- Momentary / Latching
- Tactile click
- Right angle

ML



- “Through hole”
- DPDT / 4PDT
- Momentary / Latching
- Tactile click
- Single / Bi-colour LED illumination
- Right angle

SPJ



- “Through hole” / SMT mount
- Momentary with click
- Single / Bi-colour LED illumination
- Right angle

SP86



- “Through hole” | Rocker switch
- Momentary / Latching
- Tactile click
- Single / Dual LED illumination
- Single / Double width caps

SPL12



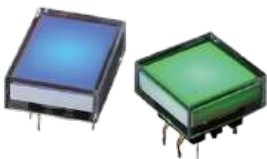
- “Through hole”
- 12mm
- Momentary with tactile click
- Single / Bi-colour LED illumination

SPL15



- “Through hole”
- 15mm ϕ
- Momentary with tactile click
- Single / Bi-colour LED illumination

SPL16



- “Through hole”
- 16mm
- Momentary with tactile click
- Single / Bi-colour LED illumination

SPD



- “Through hole”
- 12mm
- Momentary with tactile click
- Single / Bi-colour / RGB LED illumination

SPDG



LOW PROFILE

- “Through hole” / SMT mount
- 15mm, 17mm & 22mm round
- Momentary with tactile click
- Single / Bi-colour / RGB LED illumination

CUSTOMISATION



Custom caps available

3A/3M



- Miniature rocker switch
- Contact rating available up to 5A

4A/4B/4M/4U



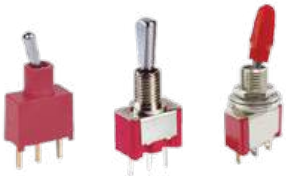
- Miniature rocker switch
- Contact rating available up to 3A
- Available with mounting bracket

Panel Rockers



- Rocker switch
- With / Without LED
- High current ratings available

1A/1F/1M



- Sealed miniature toggle switch
- Contact rating available up to 5A
- Water-proof sealing

2B/2M/2U/2T



- Sub-miniature toggle switch
- Contact rating available up to 3A
- 2B- SMT toggle switch

Dip switches



- Vertical / Right-angled mount
- Used for a variety of applications
- Alternative to jumper blocks

Slide Switches



- "Through hole" / SMT / Vertical / Right angled mount
- Standard size / Miniature / Sub-Miniature



- Solder Lug / PCB pin terminals

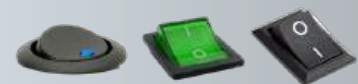


- Various circuits available such as SPST / SPDT / DPDT / SP3T

CUSTOMISATION



Cover options for Toggle Switches



Custom LED and etching for Rockers

Rotary Encoders



- “Through hole”
- Size: 8mm - 20mm
- Knurled or D (Flat) shaft
- Vertical / Right angle

LED Encoders



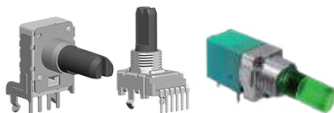
- “Through hole”
- Size: 12mm
- LED transparent hollow shaft
- Single / Dual / RGB LED illumination
- Vertical / Right angle

SMT Encoders



- SMT mounting style
- Size: 11mm
- Knurled or D (Flat) shaft

Rotary Pots



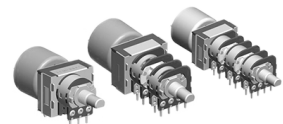
- “Through hole”
- Size: 6mm - 27mm
- Knurled or D (Flat) shaft
- From single to 4 gang
- Vertical / Right angle

Slide Pots



- Variety of mounting styles available
- Size: 4mm - 100mm
- PCB or solder lug type
- Single / Dual unit

Motorised Pots



- Options to Save ‘presets’
- Size: 60 - 100mm
- Used on mixer desks and other applications

Tact Switches



- PCB Tact switch



- “Through hole” / Surface mount



- Variety of caps available

ACCESSORIES



Variety of Pots & Encoder caps available



METAL SWITCHES

8mm to 40mm inclusive range of metal switches with Stainless and Anodised Finishes



RGB AVAILABLE

CUSTOM FINISHES



WIRING AVAILABLE

RJS-8



- SPST
- Flat / Domed / Ball head
- Momentary
- IP65 when used with O-Ring

RJS-10



- SPDT
- High head
- Momentary / Latching
- IP67 when used with O-Ring

RJS-10L



- SPDT
- High head
- Momentary / Latching
- Single / Bi-colour LED illumination
- IP67 when used with O-Ring

RJS-12 Long



- SPST | Long body
- Flat / High / Ball head
- Momentary / Latching
- IP67 when used with O-Ring

RJS-12 Short



- SPST | Short body
- Flat / High / Ball head
- Momentary
- IP65 when used with O-Ring

RJS-12L



- SPST
- Flat / High / Ball head
- Momentary
- Single / Bi-colour LED illumination
- Short body IP65 / Long body IP67

RJS-12T



INTERNALLY RESISTED

- SPST | Short body
- Ball head / Domed
- Momentary
- IP65 when used with O-Ring

RJSP12M



- SPST
- Momentary
- Single LED illumination
- IP67

RJSP12L



- SPST
- Latching
- Single LED illumination
- IP67

CUSTOMISATION



Brushed Steel

Brass

Anodised Aluminium



RJS1N1S-16



- SPST | Screw terminals
- Flat / High / Ball head
- Momentary
- IP67 when used with O-Ring

RJS1N1-16L



- SPST
- Flat / High / Ball head
- Momentary
- Single / Bi-colour / RGB LED illumination
- IP67 when used with O-Ring

RJS102-16PL



- SPST
- Flat / High head
- Momentary
- Single LED illumination
- Plastic material
- IP67 when used with O-Ring

RJS102-16-Q



- SPDT
- Flat / High head
- Momentary / Latching
- Single / Bi-colour LED illuminated
- IP67 when used with O-Ring

RJS102-16-J



- SPDT
- Flat / High head
- Momentary / Latching
- Single / Bi-colour LED illuminated
- IP67 when used with O-Ring

RJS202-16



- DPDT
- Flat / High head
- Momentary / Latching
- Single / Bi-colour LED illuminated
- IP67 when used with O-Ring

RJS102P-16



- SPDT
- Flat / High head
- Momentary / Latching
- Single / Bi-colour LED illumination
- IP67 when used with O-Ring
- Terminals for use with plug

RJS102P-16-CON



- Connector for 16mm switch

RJS102-19-CON



- Connector for 19mm switch

CUSTOMISATION



Custom LED options



RJS101-19



- SPDT
- Flat / High head
- Momentary / Latching
- Single / Bi-colour LED illumination
- IP67 when used with O-Ring

RJSX02-19



- SPDT / DPDT
- Flat / High head
- Momentary / Latching
- Single / Bi-colour / RGB LED illumination
- IP67 when used with O-Ring

RJSX04-19



- SPDT / DPDT / 3PDT
- Flat head
- Momentary / Latching
- Single / Bi-colour LED illumination
- IP65 when used with O-Ring

RJS1N1-19



- SPST | Tag terminals
- Flat / High / Ball head
- Momentary
- Single / Bi-colour LED illumination
- IP65 when used with O-Ring

RJS1N1-19M



- SPST | Tag terminals
- Flat / High / Ball head
- Momentary
- Single / Bi-colour LED illumination
- IP65 / IP67 when used with O-Ring

MICRO-TRAVEL

RJS1N1S-19



- SPST | Screw terminals
- Flat / High / Ball head
- Momentary
- IP65 when used with O-Ring

RJS1N1S-19L-B



- SPST | Screw terminals
- Domed
- Momentary
- Single / Bi-colour LED illumination
- IP65 when used with O-Ring

RJS106-19



UP TO 20A

- SPST / SPDT
- Flat head
- Momentary / Latching
- Single / Bi-colour LED illumination
- IP65 / IP67 when used with O-Ring

RJS1N1P-19



- SPST
- Flat Head
- Momentary / Latching
- Single LED illumination
- IP65 when used with O-Ring

SHORT BODY WITH LATCHING FUNCTION

CUSTOMISATION



Flat / Ball / High head options

RJS1N1S-22L



- SPDT | Screw terminals
- Flat / High / Ball head
- Momentary
- Single / Bi-colour LED illumination
- IP65 when used with O-Ring

RJS1N1-22L



- SPST | Tag terminals
- Flat / High / Ball head
- Momentary
- Single / Bi-colour LED illumination
- IP65 when used with O-Ring

RJS103-22L



- SPDT
- Flat / High head
- Momentary / Latching
- Single / Bi-colour / RGB LED illumination
- IP65 / IP67 when used with O-Ring

RJS103-22-CON



- Connector for 22mm switch

RJSMQ-22



MICRO-TRAVEL

- SPST
- Ball head
- Momentary
- IP65 when used with O-Ring

RJS102-22M



DUAL COLOUR

- SPDT
- Flat / High head
- Momentary
- Single / Dual LED illumination
- IP67 when used with O-Ring

RJSMQ-25



LOW PROFILE

- SPST
- Ball head
- Momentary
- IP65 when used with O-Ring

RJS103-25



- DPDT
- Flat head
- Momentary / Latching
- Single / Bi-colour / RGB LED illumination
- IP67 when used with O-Ring

RJS103-25-CON



- Connector for 25mm switch

CUSTOMISATION



Custom wiring available

RJS-28L



- SPDT / DPDT
- Flat / High head
- Momentary / Latching
- Single / Bi-colour / RGB LED illumination
- IP65 / IP67 when used with O-Ring

RJS103-28



- SPDT / DPDT
- Flat / High head
- Momentary / Latching
- IP65 / IP67 when used with O-Ring

RJS103-28LF



LARGE FACE

- SPDT / DPDT
- Flat / High head
- Momentary / Latching
- IP65 / IP67 when used with O-Ring

RJS-30L

- SPDT / DPDT
- Flat / High head
- Momentary/Latching
- Single / Bi-colour / RGB LED
- IP65 / IP67 when used with O-Ring



RJS-30



RJS-40L

LARGEST SIZE

- SPDT / DPDT
- Flat / High head
- Momentary / Latching
- Single / Bi-colour / RGB LED
- IP65 / IP67 when used with O-Ring



RJS-40



CUSTOMISATION



Custom LED options

FIRE ALARM CONTROL PANEL



METAL INDICATORS

6mm to 30mm types with different face options



RGB AVAILABLE



CUSTOM FINISHES

WIRING AVAILABLE

RJS-6I



- 6mm Metal Indicator
- Flush / Raised / Domed
- Single / Bi-colour LED illumination
- 3V- 220V LED as standard

RJS-8I



- 8mm Metal Indicator
- Flush / Raised / Domed
- Single / Bi-colour / RGB LED illumination
- 3V- 220V LED as standard

RJS-12I



- 12mm Metal Indicator
- Flush / Raised / Domed
- Single / Bi-colour / RGB LED illumination
- 3V- 220V LED as standard

RJS-16I



- 16mm Metal Indicator
- Flush / Raised / Domed
- Single / Bi-colour / RGB LED illumination
- 3V- 220V LED as standard

RJS-19I



- 19mm Metal Indicator
- Flush / Raised / Domed
- Single / Bi-colour / RGB LED illumination
- 3V- 220V LED as standard

RJS-22I



- 22mm Metal Indicator
- Flush / Raised / Domed
- Single / Bi-colour / RGB LED illumination
- 3V- 220V LED as standard

RJS-25I



- 25mm Metal Indicator
- Flush / Raised / Domed
- Single / Bi-colour / RGB LED illumination
- 3V- 220V LED as standard

RJS-28I



- 28mm Metal Indicator
- Flush / Raised / Domed
- Single / Bi-colour / RGB LED illumination
- 3V- 220V LED as standard

RJS-30I



- 30mm Metal Indicator
- Flush / Raised / Domed
- Single / Bi-colour / RGB LED illumination
- 3V- 220V LED as standard

CUSTOMISATION



wiring available



Custom finishes and LED options



PLASTIC SWITCHES

Vast range from 8mm to 22mm variants,
Square, Round and Rectangular

DURABLE PLASTIC



LIGHT PRESS



CUSTOM OPTIONS

SPCG



- 15mm, 17mm & 22mm
- "Through hole" / Panel mount style
- Raised / Flush
- Momentary / Latching
- Single / Bi-colour / RGB LED illumination

RJSPS8A



- 8mm panel cut out
- Round / Square / Rectangular actuator
- Single / Bi-colour LED illumination

RJSPS10A



- 10mm panel cut out
- Round / Square / Rectangular actuator
- Single / Bi-colour LED illumination

RJSPS12A



- 12mm panel cut out
- Round / Square / Rectangular actuator
- Single / Bi-colour LED illumination

RJSPS16A



- 16mm panel cut out
- Round / Square / Rectangular actuator
- Single / Bi-colour LED illumination

RJSPS1622A



- 16mm / 22mm panel cut out
- Round / Square / Rectangular actuator
- Single / Bi-colour LED illumination

RJSPS1622A



- 22mm panel cut out
- Round actuator
- Single LED illumination

RJSPS16B



- Emergency stop switch
- 16mm panel cut-out
- Round/square/rectangular actuator
- Higher rated contacts than K16

RJSAS30E



- Emergency stop switch
- 22mm panel cut out
- Mushroom, Round actuator

CUSTOMISATION



Guards available



Various cap options

Plastic Selector Switches



- Plastic Selector switches
- Custom finishes available
- With / Without LED illumination
- Multi-Position

CH



- Cap Size: 13.2mm square type
13.2 x 19.4mm rectangular type
- Full-Face / Split-Face / Dual-Colour LED illumination
- Built-in resistor for 5V - 24V

EH



- Cap Size: 14.2mm square
14.2x20.4mm rectangular
- Momentary / Latching
- Single / Bi-colour LED illumination

FH



- Cap size: 11.4mm square
11.4x16.4mm rectangular
- Full Face and Spot display type
- Built-in resistor for 5V- 24V

KH



- Cap size: 14.2mm square
14.2mm x 20.4mm rectangular
- Single / Bi-colour LED illumination
(Full-face / split-face / dual-colour / spot)

WH



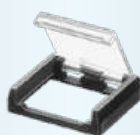
- Cap size: 25 round / 19mm square
19mm x 26mm rectangular
- Single / Bi-colour LED illumination
(Full-face / split-face / dual-colour / spot)

XH



- Cap Size: 19mm square
19mm x 26mm rectangular
- Single / Bi-colour LED illumination
(Full-face / split-face / dual-colour / spot)

CUSTOMISATION



Guard



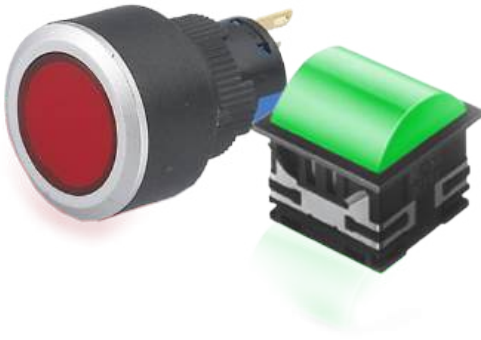
Socket



Barrier

PLASTIC INDICATORS

Vast range of plastic Indicators;
Square, Round and Rectangular



RJSPS16A



- 16mm Plastic Indicator
- Flush / Raised / Domed
- Single / Bi-colour LED illumination
- 3V- 24V LED as standard

RJSPS1622A



- 16 / 22mm Plastic Indicator
- Flush / Raised / Domed
- Single / Bi-colour LED illumination
- 3V- 24V LED as standard

BL



- 30 x 30mm or 30 x 62mm LED Indicator
- Depth behind panel only 20mm
- 30mm Square / 30 x 62mm Rectangular
- LED Full-face / Split-Face / Dual Colour

CL



- 40 x 40mm or 40 x 80mm LED Indicator
- Depth behind panel only 20mm
- LED Full-face, Split-Face or Dual-Colour

ML



- 30mm Square / Round LED Indicator
- Depth behind panel only 29mm
- 25mm diameter round hole mounting
- Mono Colour / Dual Colour

3L



- 30mm square / 30 X 62mm rectangular
- Depth behind panel only 28mm
- Various LED options

CUSTOMISATION



Custom caps for RJSPS Series



NAVIGATION

Full range of Navigation modules including rotary encoder option

PANEL/PCB COMPONENTS

MULTI MENU FUNCTIONS



SNAP IN EASY INSTALLATION

SNA1



- 5-way switch
- SP5T
- Momentary
- Custom laser cut legends for LED symbols

SNA2



- Large single button switch
- SPST
- Momentary
- Custom laser cut legends for LED symbols

SNA3



- Large 3-way switch
- SP3T
- Momentary
- Custom laser cut legends for LED symbols

SNA4



- Rectangular 5-way switch
- SP5T
- Momentary
- Custom laser cut legends for LED symbols

SF25WA



IP67 SEALED

- 5-way Navigation module
- SP5T
- Momentary
- Custom laser cut legends for LED symbols

SF19BA



- 4-way joystick
- SP5T
- Momentary
- Centre tactile button
- LED backlight

SF39BA



- 5-way switch
- SP5T
- Momentary
- Custom laser cut legends for LED symbols

SF39EA



- Rotary Encoder switch with centre button
- SPST | 12 pulse
- Number of detents: 24
- Flush actuator

SF39EB



- Rotary Encoder switch with centre button
- SPST | 12 pulse
- Number of detents: 24
- Raised actuator

CUSTOMISATION



START



Custom legends available

SPD5K2



- 5x SPD switches mounted on a PCB
- SP5T
- Momentary
- Custom laser cut legends for LED symbols

SF42EA



- 5-way Rotary switch
- SP5T | 12 pulse
- Number of detents: 24
- Flush actuator only

PB61412



- "Through hole"
- Momentary with tactile click
- Single / Bi-colour LED illumination

PB613



- "Through hole"
- Momentary / Latching
- Silent / Tactile click
- Single / Bi colour LED illumination
- Vertical / Right angle

PB614



- "Through hole" / SMT mount
- Momentary with click
- Single / Bi-colour LED illumination

PB615



- "Through hole" / SMT mount
- Momentary with tactile click
- Single / Bi-colour / RGB LED illumination
- Vertical / Right angle

PB6151



- "Through hole"
- Momentary with tactile click
- Single / Bi-colour / RGB LED illumination

PB613RF



- "Through hole"
- Momentary / Latching
- Tactile click
- Right angle
- Single / Bi colour LED illumination

PB6131RFIL



- "Through hole"
- Momentary / Latching
- Tactile click
- Single / Bi colour LED illumination
- Double Layer

CUSTOMISATION



Custom caps available

LCD Character Displays



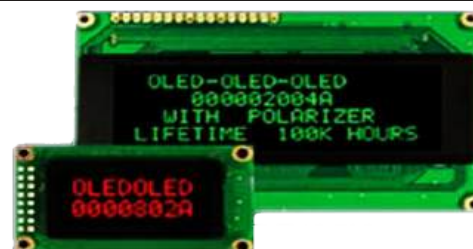
- Available in the following sizes: 8x1, 8x2, 16x1, 16x2, 16x4, 20x01, 20x02, 20x04, 24x02, 40x1, 40x2, 40x4
- Different colour LED backlight available
- Top or bottom viewing angles

LCD Graphic Displays



- Available in the following pixel sizes: 122x32, 128x64, 240x64, 128x128, 250x128
- Different colour LED backlight available
- Top or bottom viewing angles

OLED Displays



- Super clear OLED displays use organic LED technology
- Available in standard sizes to replace existing STN LCD modules
- 08x02 OLED mini display up to 20x04 or 40x02 Character display 50x16, 76x16, 100x8, 100x16, 100x32, 200x16, 96x64, 128x32, 128x64, 132x32 and 256x64 OLED graphic displays

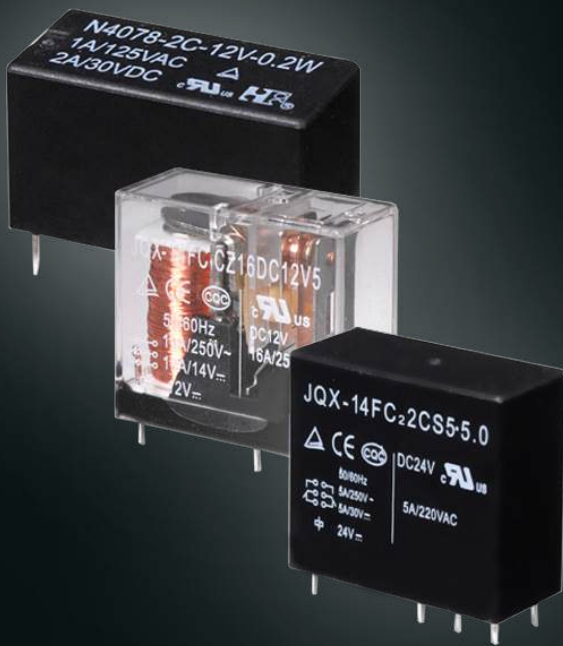
More options available on our website



RELAYS

Industrial, Automotive, Telecom Relays to cover most applications

PCB / SOCKET MOUNT TYPE



LATCHING & MOMENTARY

VARIOUS HIGH COIL RATINGS

JRC-19F



- Standard 21 × 10 × 12mm
- Max voltage: 30VDC 220VAC
- Small size, light weight
- Low coil power consumption

JRC-23F



- Standard 12.5 × 7.5 × 10mm
- Max voltage: 60VDC 125VAC
- Low coil power consumption
- High sensitivity

M4



- Standard 20 × 10 × 12mm
- Max voltage: 220VDC 250VAC
- DIL Pitch Terminals, High Sensitivity
- High Reliability

P5/P12/P24



- Standard- 14 × 9 × 5mm
- SMT- 14 × 9 × 5.3mm
- Max voltage: 220VDC 250VAC
- Max current: 2A

NVF



- Standard 20 × 15.3 × 22.5mm
- Max voltage: 75VDC
- Switching capacity up to 25A
- Suitable for automation & automobile

NVFM



- Standard 23 × 15.5 × 26mm
- Max voltage: 75VDC
- Switching capacity up to 35A
- Suitable for automation & automobile

NT73



- Standard 19.5 × 16.5 × 16.5 mm
- Max voltage 110VDC 380VAC
- Small size, light weight
- Low price reliable quality

NT75



- Standard 29 × 12.7 × 15.7mm
- Max voltage 125VDC 440VAC
- Small size, light weight
- Switching capacity up to 20A

JQX



- Standard 29 × 12.8 × 26mm.
- Max voltage: 110VDC 380VAC
- Up to 5000VAC dielectric strength
- Suitable for heavy power reverse

ACCESSORIES



Sockets available

PCB SWITCHES



PANEL MOUNT



TOUCH SENSITIVE



NAVIGATION



RELAYS



**WE SHIP
WORLDWIDE**



Tel: +44 (0) 1234 213600

sales@rjselectronics.com

www.rjselectronics.com



ADDRESS

3 Trinity Gardens
Bromham Road
Bedford
MK40 2BP

CONTACT

www.rjselectronics.com
sales@rjselectronics.com
+44 (0) 1234 213600