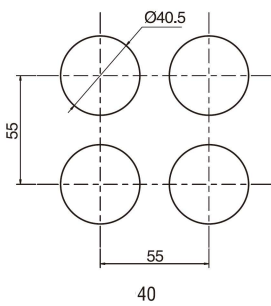




## Install Size



## Switching Operation

Type	Sign	Diagram	Contact type	Terminal Description
No.2				

Explanation: Using two terminals, double-break and slow-motion contact.

Y type NC switch can be made to order for individual product, pls check the product description.

## Contact Ratings

Rated insulation voltage		250				
Heating current Ith		3A				
Rated voltage		Temperature does not exceed the maximum allowed current				
		12V	24V	110V	220V	
Rated current	AC 50/60Hz	Resistive load	-	-	5A	3A
		Inductive load	-	-	3A	2A
	DC	Resistive load	5A	5A	1A	0.5A
		Inductive load	2A	2A	0.2A	0.1A
Contact material		Silver Plated Gold				



## Rated Parameters

Working voltage		24V	110V	220V
Contact Parameter	AC (50/60Hz)	-	1.0A	0.5A
	DC	1.0A	0.2A	-
		0.7A	0.1A	-

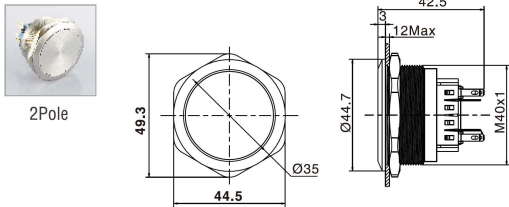
## How to Order

Corresponding number	RJS 03 - L(A)-H-R ~67 J								
	1	2	3	4	5	6	7	8	9
1	Poles	1 / 2							
2	Size	22 / 25 / 30 / 40 mm							
3	Function	Momentary / Latching							
4	Shape of Top	Flat / High / Domed / Mushroom Head / Full-face illumination							
5	Illumination Type	Ring / Dot / Custom							
6	Colour								
7	Material	Stainless Steel / Black Anodised Aluminium / Other metal finishes *							
8	Voltage	24VDC 110VAC	12VDC 220VAC						6.3VDC
9	IP Rating	IP65 / IP67							

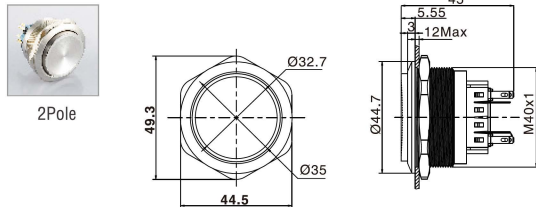
# RJS203-40~67

Appearance	Shape of top	Illuminated type	Operation	Contact	Model	Crust material
	Flat round	Without LED	Momentary	2NO+2NC	RJS203-40-F~67J	BS: Stainless Steel
	High round	Without LED	Momentary	2NO+2NC	RJS203-40-H~67J	
	Domed round	Without LED	Momentary	2NO+2NC	RJS203-40-B~67J	

RJS203-40-F~67J



RJS203-40-H~67J



RJS203-40-B~67J

