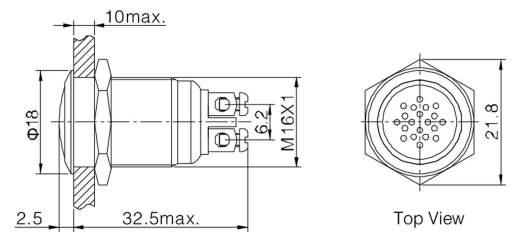




RJS1N1S-16-BUZZ



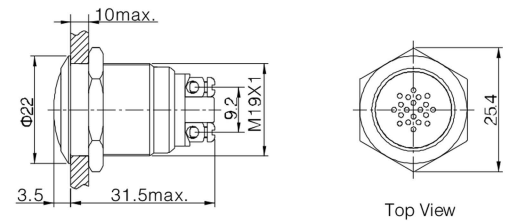
- ⊙ Φ 16mm Diameter
- ⊙ Sound Type(□): Continuous Buzz(M) / Incontinuous Buzz(JM)
- ⊙ Voltage(▲): DC12V / DC24V
- ⊙ Rated Current: \leq 30mA
- ⊙ Sound Intensity: \geq 85dB(about 0.1Meter away) / \geq 75dB(about 1Meter away)
- ⊙ Crust Material(◎): Stainless steel(S)
- ⊙ IP Degree: IP40,IK04



RJS1N1S-19-BUZZ.2



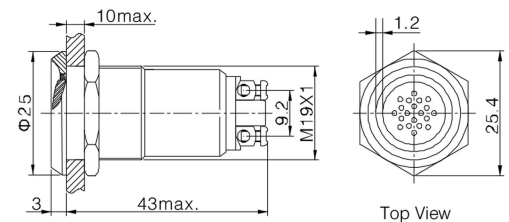
- ⊙ Φ 19mm Diameter
- ⊙ Sound Type(□): Continuous Buzz(M) / Incontinuous Buzz(JM)
- ⊙ Voltage(▲): DC12V / DC24V
- ⊙ Rated Current: \leq 30mA
- ⊙ Sound Intensity: \geq 85dB(about 0.1Meter away) / \geq 75dB(about 1Meter away)
- ⊙ Crust Material(◎): Stainless steel(S)
- ⊙ IP Degree: IP40,IK04



RJS1N1S-19-BUZZ.3



- ⊙ Φ 19mm Diameter
- ⊙ Sound Type: Flicker Buzzer
- ⊙ Color(Δ): R G Y O B W
- ⊙ Voltage(▲): DC12V / DC24V
- ⊙ Rated Current: \leq 30mA
- ⊙ Sound Intensity: \geq 85dB(about 0.1Meter away) / \geq 75dB(about 1Meter away)
- ⊙ Crust Material(◎): Stainless steel(S)
- ⊙ IP Degree: IP40,IK04



RJS1N1S-19-BUZZ.4



- ⊙ Φ 19mm Diameter
- ⊙ Sound Type(■): Continuous Buzz(M) / Incontinuous Buzz(JM) / Flicker Buzzer(SM)
- ⊙ Color(Δ): R G Y O B W
- ⊙ Rated Voltage(▲): DC12V / DC24V / AC110V / AC220V
- ⊙ Sound Intensity: \geq 85dB(about 0.1Meter away) / \geq 75dB(about 1Meter away)
- ⊙ Crust Material(◎): Stainless steel(S)
- ⊙ IP Degree: IP40,IK04

