



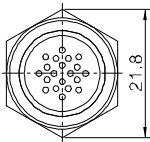
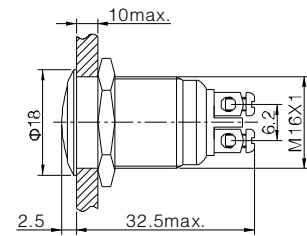
## Buzzers

### RJS1N1S-16/19-BUZZ

#### 1.



- ⊙  $\Phi$  16mm Diameter
- ⊙ Sound Type(□): Continuous Buzz(M) / Incontinous Buzz(JM)
- ⊙ Voltage(▲): DC12V / DC24V
- ⊙ Rated Current:  $\leq$ 30mA
- ⊙ Sound Intensity:  $\geq$ 85dB(about 0.1Meter away) /  $\geq$ 75dB(about 1Meter away)
- ⊙ Crust Material(◎): Stainless steel(S)
- ⊙ IP Degree: IP40,IK04

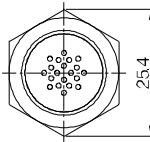
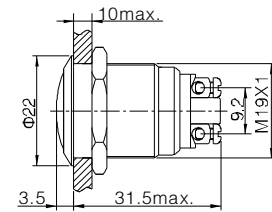


Top View

#### 2.



- ⊙  $\Phi$  19mm Diameter
- ⊙ Sound Type(□): Continuous Buzz(M) / Incontinous Buzz(JM)
- ⊙ Voltage(▲): DC12V / DC24V
- ⊙ Rated Current:  $\leq$ 30mA
- ⊙ Sound Intensity:  $\geq$ 85dB(about 0.1Meter away) /  $\geq$ 75dB(about 1Meter away)
- ⊙ Crust Material(◎): Stainless steel(S)
- ⊙ IP Degree: IP40,IK04

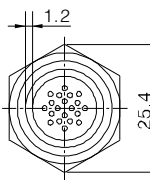
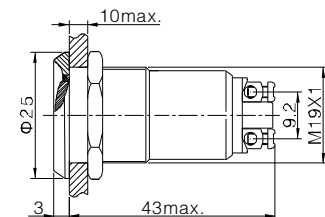


Top View

#### 3.



- ⊙  $\Phi$  19mm Diameter
- ⊙ Sound Type: Flicker Buzzer
- ⊙ Color( $\Delta$ ): R G Y O B W
- ⊙ Voltage(▲): DC12V / DC24V
- ⊙ Rated Current:  $\leq$ 30mA
- ⊙ Sound Intensity:  $\geq$ 85dB(about 0.1Meter away) /  $\geq$ 75dB(about 1Meter away)
- ⊙ Crust Material(◎): Stainless steel(S)
- ⊙ IP Degree: IP40,IK04

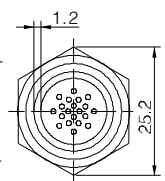
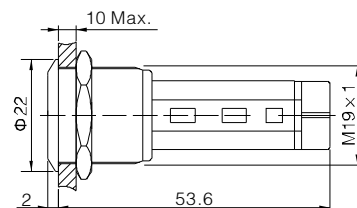


Top View

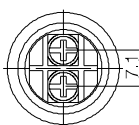
#### 4.



- ⊙  $\Phi$  19mm Diameter
- ⊙ Sound Type(■): Continuous Buzz(M) / Incontinous Buzz(JM) / Flicker Buzzer(SM)
- ⊙ Color( $\Delta$ ): R G Y O B W
- ⊙ Rated Voltage(▲): DC12V / DC24V / A C110V / AC220V
- ⊙ Sound Intensity:  $\geq$ 85dB(about 0.1Meter away) /  $\geq$ 75dB(about 1Meter away)
- ⊙ Crust Material(◎): Stainless steel(S)
- ⊙ IP Degree: IP40,IK04



Top View



Terminal Arrangement