



Degree of Protection	IP67/IP68
Contact Type	1 NO
Rated Voltage	DC36V
Rated Current	2A
Minimum Applicable Load	3V AC/DC, 1mA
Contact material	Silver plated
Operating Temperature	-25° to +55°C
Operating Humidity	45 to 85% RH
Contact Resistance	≤50mΩ
Insulation Resistance	≤50mΩ
Vibration Resistance	10 to 55Hz, amplitude 1.2mm p-p
Degree of Protection	>10g
Electrical Life	200,000 operations minimum (at full rated load)
Mechanical Life	1,000,000 operations minimum
Dielectrical Life	Switch Unit: 2,000V AC, 1 min. between live/dead part and terminals of different poles; 1,000V AC, 1 minute between terminals of the same pole; 1,500V AC, 1 minute between contact and lamp terminals. Illumination Unit: 2,000V AC, 1 min. between live part/ground
Connection Form	Foot welding
Soldering Temperature	20W/5 seconds or 260 °C/3 seconds
Tightening Torque	5-14N.m
Action Stroke	≤0.5mm
Action Force	≤3N



## How to Order

**RJS1N1LP -**         **- 68J**

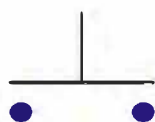
12mm 16mm 19mm 22mm 25mm 30mm	Momentary	Flat	Ring Illuminated	LED Colour <span style="color:red">R</span> Red <span style="color:green">G</span> Green <span style="color:blue">B</span> Blue <span style="color:white">W</span> White <span style="color:yellow">Y</span> Yellow <span style="color:orange">O</span> Orange	Brushed Steel Black Anodised -Aluminium	Voltage 3V DC 5V/6.3V DC 12V DC 24V DC	IP Rating
--	-----------	------	------------------	--	---	--	-----------

FOR EXAMPLE: RJS1N1LP-25M-F-R~68J

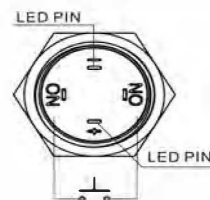
## Lamp Ratings

Lamp Type	LED lamp(DC)
Rated Voltage	3V,6V,12V,24V
Rated Current	Approx 15 - 20mA
LED Color	<span style="color:red">R</span> <span style="color:green">G</span> <span style="color:yellow">Y</span> <span style="color:orange">O</span> <span style="color:blue">B</span> W
Life	50000 hours(Reference)
Lamp Circuit diagram	
Power	0.06W
Chromogenic index	60-70
Luminous flux	80-100mcd(lm)
Forward voltage	2.0-3.2V
Reverse voltage	3V
(ESD) Electrostatic breakdown voltage	3000V
Rated current	0.006A
Lighting angle	120°
Luminous efficiency	110(lm/W)
thermal resistance	≤50°C/W
Maximum allowable junction temperature	120°C
Ageing time	1000 hours of conventional aging 100%; 6000 hours conventional aging 98%

## Contact Diagram



Contact Style



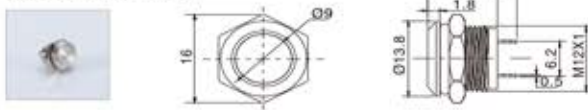
Terminal Description

■ Non Illuminated Low Profile Push Button

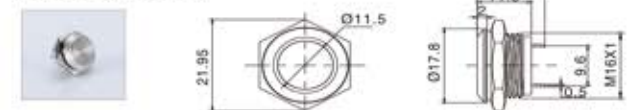
Appearance	Operation	Contact	Model	Voltage	Crust material
	Momentary	1NO	RJS1N1LP-12M- F~67J	24VDC 12VDC 6.3VDC 3VDC	Brushed Steel Black Anodised -Aluminium
		1NO	RJS1N1LP-16M- F~67J		
		1NO	RJS1N1LP-19M- F~67J		
		1NO	RJS1N1LP-22M- F~67J		
		1NO	RJS1N1LP-25M- F~67J		

■ Dimensions

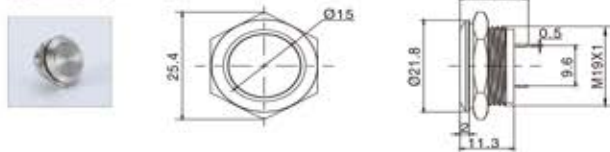
RJS1N1LP-12M- F~67J



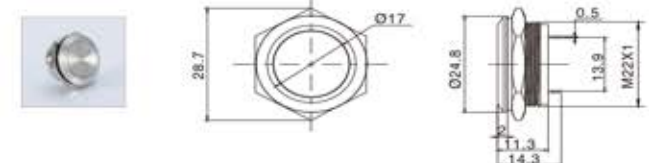
RJS1N1LP-16M- F~67J



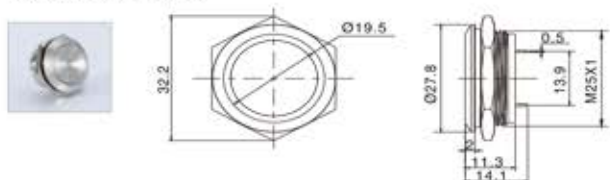
RJS1N1LP-19M- F~67J
















RJS1N1LP-22M- F~67J



RJS1N1LP-25M- F~67J

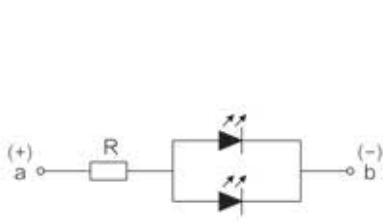


■ LED Illuminated Low Profile Flat Head Push Button

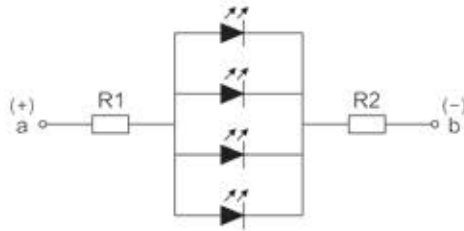
Product Appearance	Operation	Contact	Part Number	LED Colour	Voltage	Material
	Momentary	1NO	RJS1N1LP-12M-F-R~68J	<ul style="list-style-type: none"> <li> Red</li> <li> Green</li> <li> Blue</li> <li> White</li> <li> Yellow</li> <li> Orange</li> </ul>	24VDC 12VDC 6.3VDC 3VDC	Stainless Steel Black Anodised Aluminium
		1NO	RJS1N1LP-16M-F-R~68J			
		1NO	RJS1N1LP-19M-F-R~68J			
		1NO	RJS1N1LP-22M-F-R~68J			
		1NO	RJS1N1LP-25M-F-R~68J			
		1NO	RJS1N1LP-30M-F-R~68J			
		1NO	RJS1N1LP-19M-F-R~68J Screw Terminal			



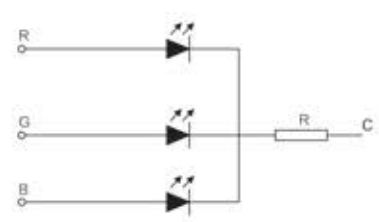
## LED LAMP Diagram



12MM / 16MM / 19MM

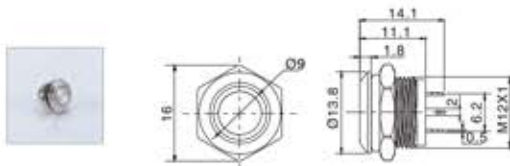


22MM / 25MM

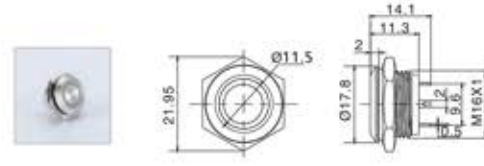


30MM

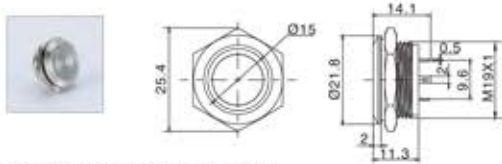
## Dimensions



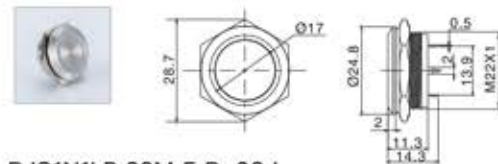
RJS1N1LP-12M-F-R~68J



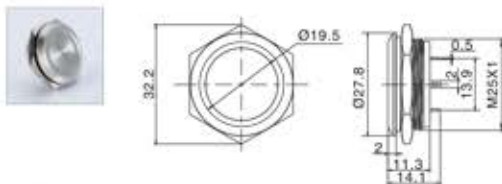
RJS1N1LP-16M-F-R~68J



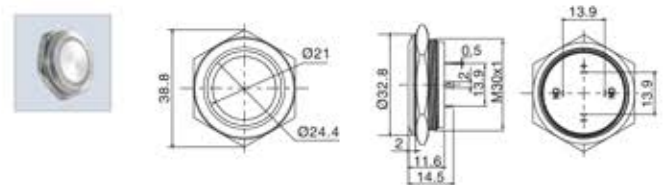
RJS1N1LP-19M-F-R~68J



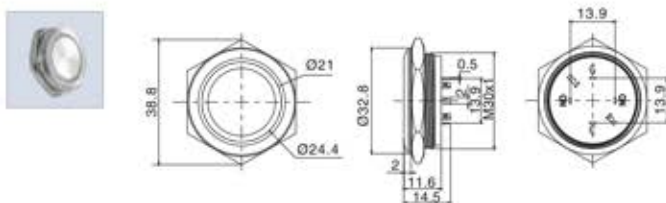
RJS1N1LP-22M-F-R~68J



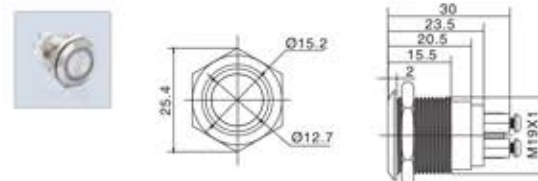
RJS1N1LP-25M-F-R~68J



RJS1N1LP-30M-F-R~68J



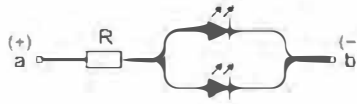
RJS1N1LP-30M-F-RGB~68J



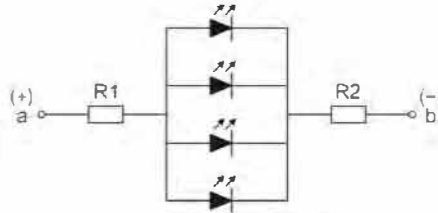
RJS1N1LPS-19M-F-R~68J



## LED Lamp Line Diagram

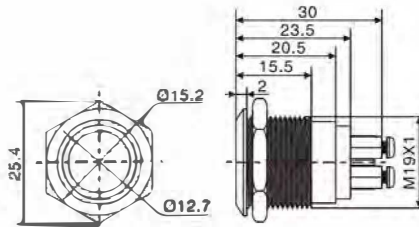


16/19mm



22/25mm

## Over All Dimensions



Appearance	Operation	Contact	Part Number	Material
<p>Back</p>	Momentary	1NO	RJS1N1LP-19M-F-68J	Brushed Steel Black Anodised Aluminium
<p>Back</p>	Momentary	1NO	RJS1N1LP-19M-F-R-68J	

## Dimensions

