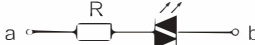


Technical Parameter

Degree of Protection	IP67
Contact Type	1 NO
Maximum Voltage	250V AC/DC
Thermal Current	2A
Minimum Applicable Load	5V AC/DC, 1mA
Contact material	Silver plated
Terminal Style	.110" Solder / Quick Connect
Operating Temperature	-25°C to +55°C
Operating Humidity	45 to 85% RH
Contact Resistance	50mΩ maximum
Insulation Resistance	100mΩ minimum (500VDC megger)
Vibration Resistance	10 to 55Hz, amplitude 1.5mm p-p
Degree of Protection	>10g
Electrical Life	100,000 operations minimum (at full rated load)
Mechanical Life	Momentary: 1,000,000 operations minimum
Dielectrical Life	Switch Unit: 2,000V AC, 1 min. between live/dead part and terminals of different poles; 1,000V AC, 1 minute between terminals of the same pole; 1,500V AC, 1 minute between contact and lamp terminals. Illumination Unit: 2,000V AC, 1 min. between live part/ground
Soldering Temperature	20W/5 seconds or 260°C/3 seconds

Lamp Ratings





Lamp Type	LED lamp(AC/DC)
Rated Voltage	0V, 5V, 12V, 24V, 110V AC, 220V AC
Rated Current	Approx. 15 - 20mA
LED Color	R G Y O B W
Life	40000 hours(Reference)
Lamp Circuit diagram	 <p>Using AC/DC LED lamp, the terminals have no difference of anode and cathode</p>

DC LED and other voltage can be made to order.

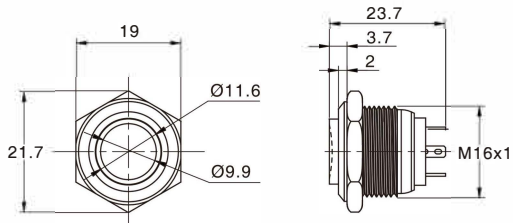
Contact Ratings

Rated insulation voltage			250V		
Heating current I _{th}			3A Temperature does not exceed the maximum allowed current		
Rated voltage			24V	110V	220V
Rated current	AC 50/60Hz	Resistive load	2A	1A	0.5A
		Inductive load	-	-	-
	DC	Resistive load	0.7A	0.2A	0.1A
		Inductive load	-	-	-
	Contact material			Silver nickel oxide	

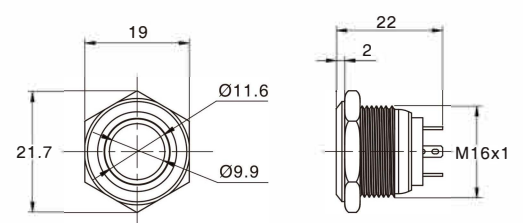


Appearance	Shape of top	Illuminated type	Operation	Contact	Model	Colour	Voltage	Material
	High ring round	With LED	Momentary	1NO	RJS1N1-16L-H-R~67J	<div> R Red G Green B Blue W White Y Yellow O Orange </div>	0V 3V 5V 12V 24V 110V AC 220V AC	BS - BRUSHED STEEL BLK - BLACK ANODISED CUSTOM FINISHES (subject to MOQ's)
	Flat ring round	With LED	Momentary	1NO	RJS1N1-16L-F-R~67J			
	Flat dot round	With LED	Momentary	1NO	RJS1N1-16L-F-D~67J			
	High dot round	With LED	Momentary	1NO	RJS1N1-16L-H-D~67J			

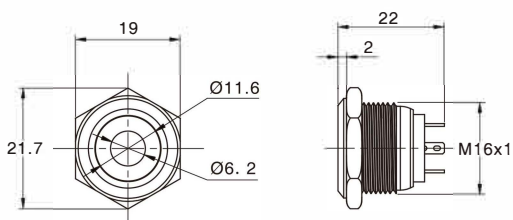
High ring round



Flat ring round



Flat dot round



High dot round

