

- Hole sizes: 19mm
- Protection level: IP65/IP67/IK10
- Contact silver-plated gold: 1.5 μ
- LED super bright cold light source lamp display
- Customizable pattern, color and size
- Comply with IEC60947-5-1 GB14048.5 standard

Specifications

Degree of Protection	IP67 /IP65
Contact Type	1NO
Maximum Voltage	250V AC/DC
Thermal Current	5A
Minimum Applicable Load	5V AC/DC, 1mA
Contact material	Silver plated gold
Terminal Style	.110" Solder / Quick Connect
Operating Temperature	-25°C to +55°C

Operating Humidity	45 to 85% RH
Contact Resistance	50m Ω
Insulation Resistance	100m Ω minimum (500VDC megger)
Vibration Resistance	10 to 55Hz, amplitude 1.5mm p-p
Degree of Protection	>10g
Electrical Life	100,000 operations minimum (at full rated load)
Mechanical Life	Latching : 1,000,000 operations minimum Momentary: 1,000,000 operations minimum
Dielectrical Life	Switch Unit: 2,000V AC, 1 min. between live/dead part and terminals of different poles; 1,000V AC, 1 minute between terminals of the same pole; 1,500V AC, 1 minute between contact and lamp terminals. Illumination Unit: 2,000V AC, 1 min. between live part/ground
Soldering Temperature	20W/5 seconds or 260°C/3 seconds

LED Rating

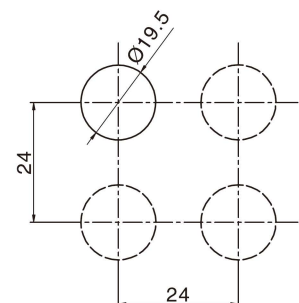
Lamp Type	LED lamp(AC/DC)
Rated Voltage	3V,6V,12V,24V,36V,48V,110V,220VAC/DC
Rated Current	15mA - 20mA
LED Color	R G Y O B W
Life	40000 hours(Reference)
Lamp Circuit diagram	<p>Using AC/DC LED lamp, the terminals have no difference of anode and cathode</p>

DC LED and other voltage can be made to order.

Contact Rating

Rated insulation voltage		250V			
Heating current Ith		3A Temperature does not exceed the maximum allowed current			
Rated voltage		24V	110V	220V	
Rated current	AC 50/60Hz	Resistive load	2A	-	-
		Inductive load	-	1A	0.5A
	DC	Resistive load	0.7A	0.2A	0.1A
		Inductive load	-	-	-
Contact material		Silver nickel oxide		Silver Plated Gold	

Panel Cut-Out



Switching Operation

Type	Sign	Diagram	Terminal Description
No.3			

Explanation: Using two terminals, double-break and slow-motion contact. Y type NC switch can be made to order for individual product, pls check the product description.

Select and Key Handle Position

Operation		Contact		
		↙	↑	↗
90° 2 2 Positon	Maintained			
	Momentary			
90° 3 3 Positon	Maintained			
	Momentary			

Drawing

Appearance	Shape of top	Illuminated type	Operation	Contact	Model	Colour	Voltage	Crust material	
	Selector Switch	Without LED	90° 2位 2 Positon	1NO+1NC	-411-0	<ul style="list-style-type: none"> ■ Red ■ Green ■ Blue ■ White ■ Yellow ■ Orange 	24VDC 12VDC 6.3VDC 110VAC 220VAC	Brushed Steel Anodised Black	
				2NO+2NC	-412-0				
			90° 3 3Positon	2NO+2NC	-512-0				
				2NO+2NC	-512-2				
			With LED	90° 2 2 Positon	1NO+1NC				-471-0
					2NO+2NC				-472-0
		90° 3 3Positon		2NO+2NC	-572-0				
				90° 2 2 Positon	1NO+1NC		-471-2		
		2NO+2NC			-472-2				
		90° 3 3Positon		2NO+2NC	-572-2				

