

# RJS-SDE-3

ROTARY ENCODER WITH LCD SWITCH



## General Description

The SDE-3 Series switch features a rotary encoder with pushbutton and dimmable backlight. CAN BUS Fully compatible with the "ISO 11898" standard. Providing simple installation and connectivity.

### Feature

- CAN High speed ( up to 1 Mbps)
- Panel cutting Ø25mm
- Front Panel IP65
- 1.28 inch full color Circle LCD display
- Option LED backlight
- Pushbutton Switch
- Rotary encoder with Transmissive optical Sensor
- Customized CAN BUS service

PAT. I688980

PAT. I738469

PAT. D199473

PAT. ZL201822200452.0

PAT. ZL201830757963.5



## General Specifications

Communication interface : CAN BUS ISO 11898  
CAN BUS Speed : 1 Mbps  
CAN ID : 0x0588  
DLC : 8 Bytes  
Power Supply : 5V  
Operation Current : 250mA(Max.)  
Operation Temperature : -20°C~70°C  
Enclosure protection : IP65(Front Panel)  
Operating Life(Encoder) : C.W. 100,000 cycles min  
& C.C.W 100,000 cycles min.  
Operating Force(Encoder) : 1.5Kgf-cm (Max.)  
Operating Life(Switch) : 100,000 cycles min.  
Operating Force(Switch) : 800gf±300gf  
Backlight : RGB LED

### Display

Size : 1.28 inch Circle TFT  
Resolution : 240RGB(H) x 240(V)  
Display Color : Full Color, 262K(max.)  
Luminance(cd/m2) : 400(cd/m2)  
Backlight : White LED

### Materials

Knob : Polyamide(PA)  
Polycarbonate (PC)  
Aluminum  
Lens : Polycarbonate (PC)  
Base : Polycarbonate (PC)  
Washer : NBR  
Nuts : Polyamide(PA)  
Cable : UL1571#28AWG,4 wires

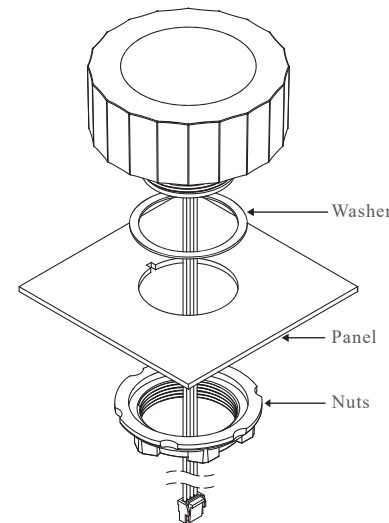
## Block Diagram

### / Pin function

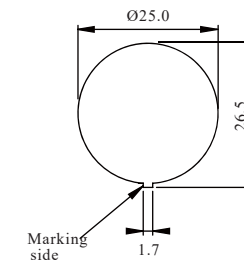
Pin	Color	Function
1	Red	Power Supply Voltage 5V
2	White	CAN H
3	Yellow	CAN L
4	Black	Ground

The connector on the SDE-3 module is similar JST GHR-04V-S  
Applicable Connector: Conductor pitch / 1.25mm Conductor width / □0.2mm

### / Installation Notes



### / Panel cutting



Panel thickness 1.5~4mm

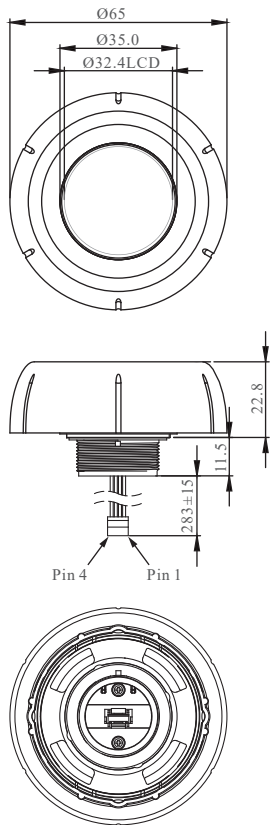
# RJS-SDE-3

ROTARY ENCODER WITH LCD SWITCH

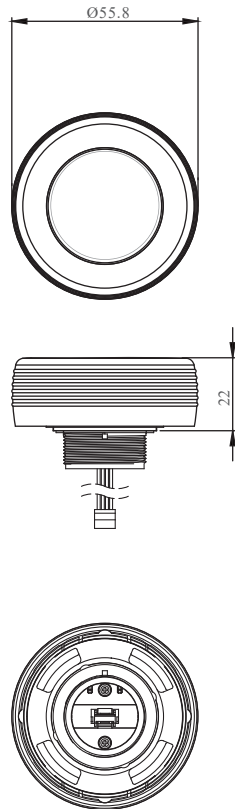


## Dimension

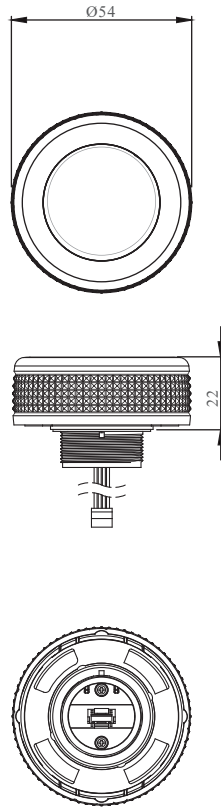
/ Knob type : P



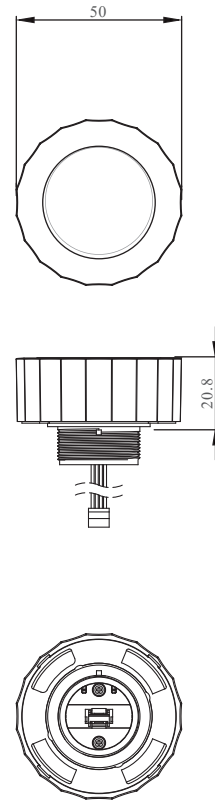
/ Knob type : 1



/ Knob type : 2



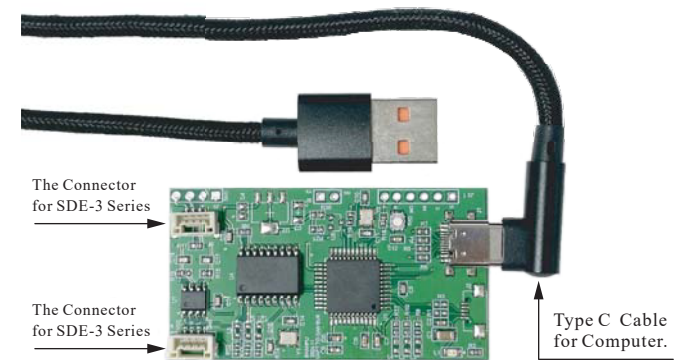
/ Knob type : 3



## Option

/ Development Kit P/N : K-SDE-3-02

The USB-CANBUS (K-SDE-3-02) developed and designed by SDE-3, with the SDE-3 dedicated application, can be set via a computer (Windows system) SDE-3 picture, LED backlight, OUTPUT / INPUT ID or OUTPUT / INPUT CAN Code. Dimension(Without cable):60mm(W)\*32mm(D)\*5.8mm(H)



# RJS-SDE-3

ROTARY ENCODER WITH LCD SWITCH



How to order



**SDE-3-PL** | Knob type P / Silver / Plastic



**SDE-3-10** | Knob type 1 / Silver / Aluminum



**SDE-3-2L** | Knob type 2 / Silver / Plastic



**SDE-3-3T** | Knob type 3 / Transparent / Plastic



**SDE-3-P5** | Knob type P / Black / Plastic



**SDE-3-15** | Knob type 1 / Black / Aluminum



**SDE-3-25** | Knob type 2 / Black / Plastic