

METAL

VANDAL PROOF SWITCHES



A Helpful Guide

To choose the right Antivandal for you





KEY FEATURES

Helping you to choose the right switch for your project.

There is a lot to decide when picking an Antivandal Switch...

01. Momentary or Latching?

Latching switches – when the switch is pressed the circuit is activated and remains in this state until pressed again. Whereas, Momentary switches only remain in their contact state when pressed. When released the circuit returns to its normal state.

02. Poles & Throws

“Pole” refers to the number of circuits that a switch can control for an operation. “Throw” refers to the number of contacts. Most antivandal switches are available as single pole or double pole.

03. Illumination & Voltages

Switches can have either ring, dot, or custom illumination with single, bi-colour or RGB LED. (Subject to the switch range). Voltages include; 0v, 3v, 5v, 12v, 24v as standard.

04. IP Rating

If a dust proof & water/weatherproof option is required, the IP rating will be a factor. We offer ratings from IP65 – IP68 switch (subject to switch series).. [Read more](#)

05. Additional Features

Different designs require a specific set of attributes in a metal switch. We can provide short body options such as the RJSINILP series, designed for more space behind the panel. Perhaps, you need a Micro Travel option? Contact us and we will help provide the best switch for your project.

Sizes Available:

8mm, 10mm, 12mm, 16mm, 19mm, 22mm, 25mm, 30mm, 40mm.

CUSTOMISATION

We understand one size doesn't fit all, and some products require more of a custom approach, see below a few custom options!

Wiring

Made to order, custom wiring is available across many of our antivandal switches.

Custom Legends & Logos

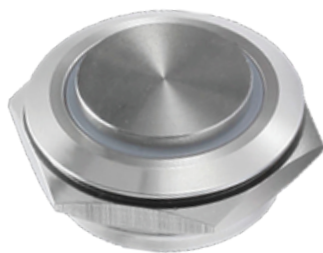
Custom symbols and logos can be laser marked, etched or stamped on to a number of our switches.

Material finishes

Select from a variety of material finishes, with custom colour anodised options available.

RJS1N1LP SERIES | LOW PROFILE SWITCHES

This Series has an ultra-low profile of 12.3mm from the underside of the bezel. In a typical 3mm panel this would mean there would only be 9.3mm behind the panel including switch terminals.



NEW

New high head head option
now available!

KEY FEATURES

01 SIZES

Available in sizes
ø12mm - ø30mm

02 ILLUMINATED OPTIONS

Available with single/bi-colour &
RGB LED illumination.

03 FUNCTION

Available with momentary
function only.

04 KEY FEATURE

MICRO TRAVEL

Meaning short travel when pressed.

05 IP RATINGS

IP67 (from the front) rated options
available.

RJSX07 SERIES | HIGH CURRENT SWITCHES

The RJSX07 High Current Switches replace traditional multiple components assembly with their single unit design.



**Brushed steel or
Black finishes as standard**



KEY FEATURES

01 SIZES

1NO in sizes 16mm, 19mm, 22mm, 25mm or 2NO in sizes 22mm and 25mm.

02 SWITCH RATINGS

Ratings of 12V/20A & 24V/15A resistive load.

03 FUNCTION

Available with momentary or latching function.

04 ILLUMINATED OPTIONS

Ring, power symbol with ring or non illumination options available.

05 IP RATINGS

IP67 rated (at the front)

Visual Guide:

Flat head

High head

Ball head

Shape



Illumination
Options

Ring

Dot

Custom



Brushed Steel

Black Anodised
Aluminium

Brass

Custom

Materials



Quick Links:

[Antivandal Category page](#)

[All products](#)

Size

[8mm Antivandal switches](#)

[10mm Antivandal switches](#)

[12mm Antivandal switches](#)

[16mm Antivandal switches](#)

[19mm Antivandal switches](#)

[22mm Antivandal switches](#)

[25mm Antivandal switches](#)

[28mm Antivandal switches](#)

[30mm Antivandal switches](#)

[40mm Antivandal switches](#)

Attribute

[High Current Antivandal switches](#)

[Low Profile Antivandal switches](#)

[RGB LED Illuminated Antivandal switches](#)