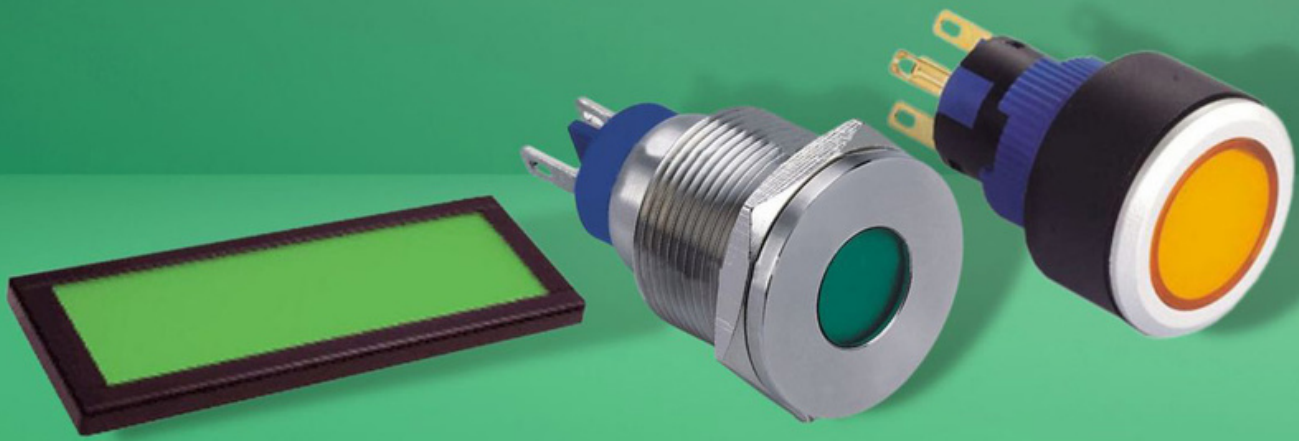


LED INDICATORS

A Helpful Guide

To choose the right Indicator for you





KEY FEATURES

LED Options

Single LED Illumination

This type of illumination displays a single LED colour. **Bi-Colour LED Illumination**

A bi-colour LED switch can display two colours simultaneously or seamlessly switch between two LED illuminations.

RGB LED Illumination

Switches listed with 'RGB' LED illumination offer a combination of red, blue, and green, allowing for over 16 million hues of light.

Shapes

Round, Square,
Flat Square, Rectangular

IP Rating

IP40, IP65, IP67

Sizes

- 6mm
- 8mm
- 10mm
- 12mm
- 16mm
- 19mm
- 22mm
- 25mm
- 28mm
- 30mm

Terminal Types

- Pin terminal Screw
- Tab/soldering
- Solder lug Connector
- Terminal block

METAL INDICATORS



***Flush
Head***



***Raised
Head***



***Domed
Head***



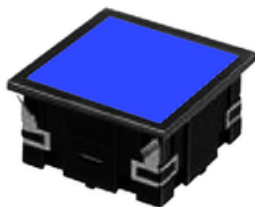
***Concave
Head***

Compared to our plastic alternatives, our metal indicators are more hard wearing.

These indicators are available in sizes from 6mm – 30mm to suit a range of designs and applications for a wide range of industries. Our metal LED indicators can also have various finishes, including brushed steel and black anodised.

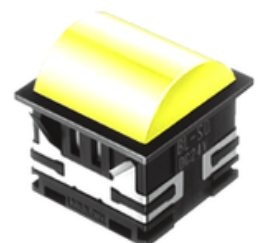
Many of our LED indicators support a voltage of 3V – 24V as standard.

PANEL INDICATORS



Panel indicators are mounted onto a panel.

Available with single, bi-colour or split-face LED illumination display.

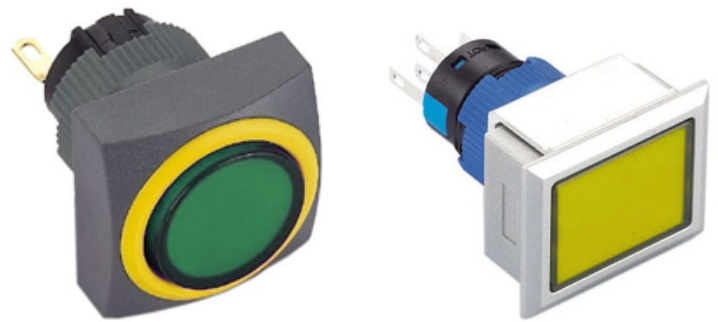


PLASTIC INDICATORS



- Full LED illumination
- High head Square round or rectangular

Plastic border around LED Square, round or rectangular head LED face can be different shape to head.



- Lamp head indicator
- Full LED illumination
- Terminal Block With or without markings

MLC Series

Ultrabright LED Indicator

High Visibility,
Even in Sunlight



- Red, green or yellow LEDs
- Diamond-cut cover for increased visibility
- Single or bi-colour illumination options
- IP65 rated

Quick Links:

[Indicators & Pilot Lights](#)

[All products](#)

Attribute

[Metal LED Indicators](#)

[Plastic LED Indicators](#)

[LED Panel Indicators](#)

[MLC Series](#)

Size

[6mm Indicators](#)

[19mm Indicators](#)

[8mm Indicators](#)

[22mm Indicators](#)

[10mm Indicators](#)

[25mm Indicators](#)

[12mm Indicators](#)

[28mm Indicators](#)

[16mm Indicators](#)

[30mm Indicators](#)