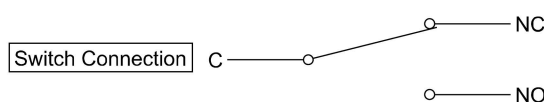


Full-face, Split-Face, Dual Colour with built-in resistor.
IP65rated, oil and water tight (front) version.

■ FEATURES

- $\phi 16\text{mm}$ (.627") mounting hole.
- Depth behind panel : Only 22mm.
- Full-Face, Split-Face, Dual-Color illumination available.
- Built-in resistor for 5V, 12V, 24V use.
- Light Cartridge is removable from front panel.
- Button Size: 14.2mm square type, 14.2×20.2mm rectangular type.
- Precision-snap action switch movement with coil spring assures long life and outstanding tactile feedback.
- Silver Contact (Gold-Plated) and W/E Alloy #1 Cross-bar Contact provided.
- Accessories: Guard Cover, Mounting Wrench, Switch Unit Removal Tool.



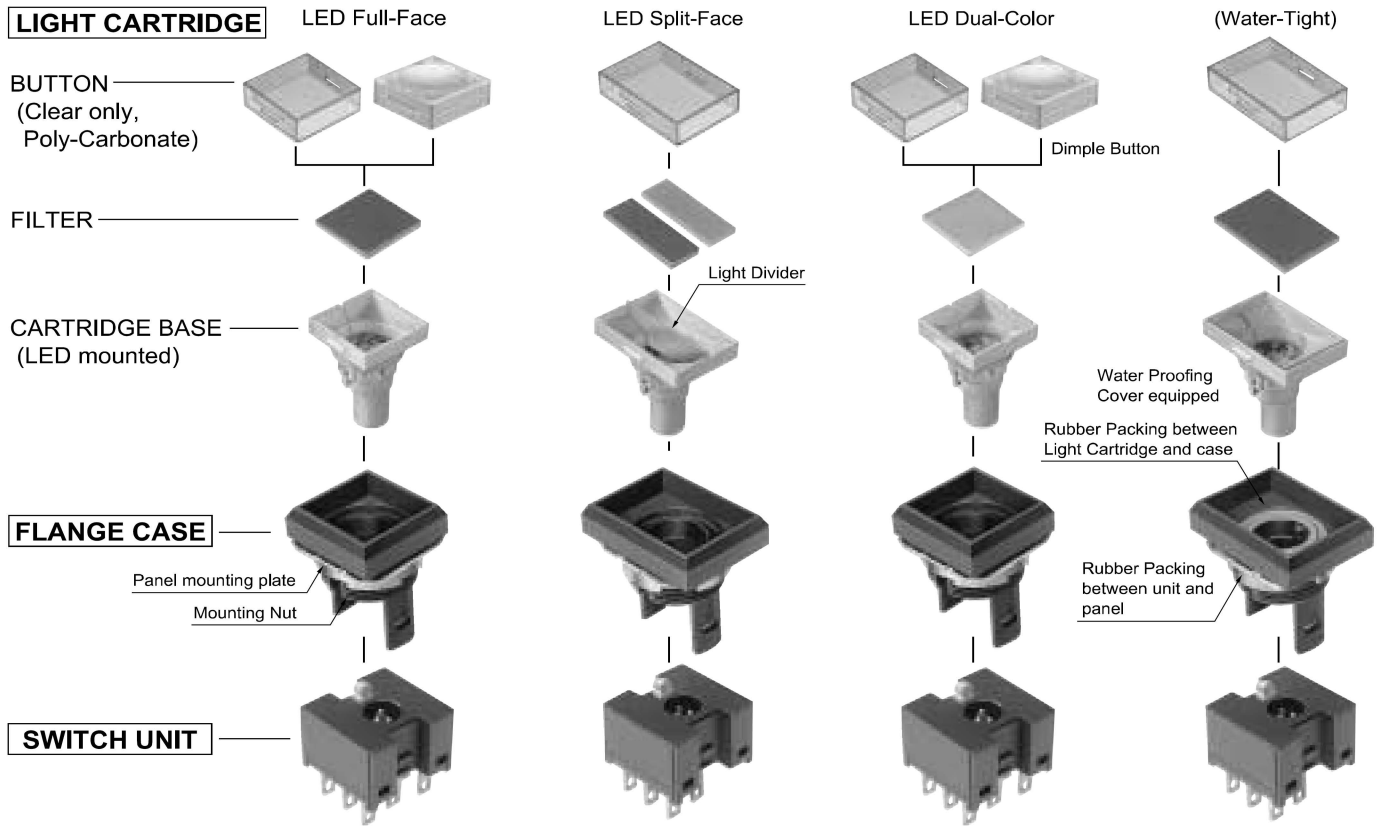
Specifications

Contact	Silver Contact (Gold-Plated)	W/E Alloy #1 Cross-bar Contact
Electrical Rating	AC125V,250V 3A(Resistive)	AC125V 0.1A, DC30V 0.1A(Resistive)
Insulation Resistance	More than 100M Ω at 500V DC	
Dielectric Strength	1000V AC RMS between NC and NO terminal 1500V AC RMS between terminals and ground 50/60Hz for 60sec. at normal ambient temperature and humidity	600V AC RMS between NC and NO terminal 1500V AC RMS between terminals and ground 50/60Hz for 60sec. at normal ambient temperature and humidity
Contact Resistance	Less than 30m Ω (Initial) at DC6V 1A	Less than 50m Ω (Initial) at DC6V 0.1A
Mechanical Life	Momentary Action :more than 2,000,000 operations	Alternate Action : more than 200,000 operations
Electrical Life	More than 100,000 operations at max. rated load	
Ambient Temperature	-15°C to +50°C	
Ambient Humidity	80% RH (max.)	

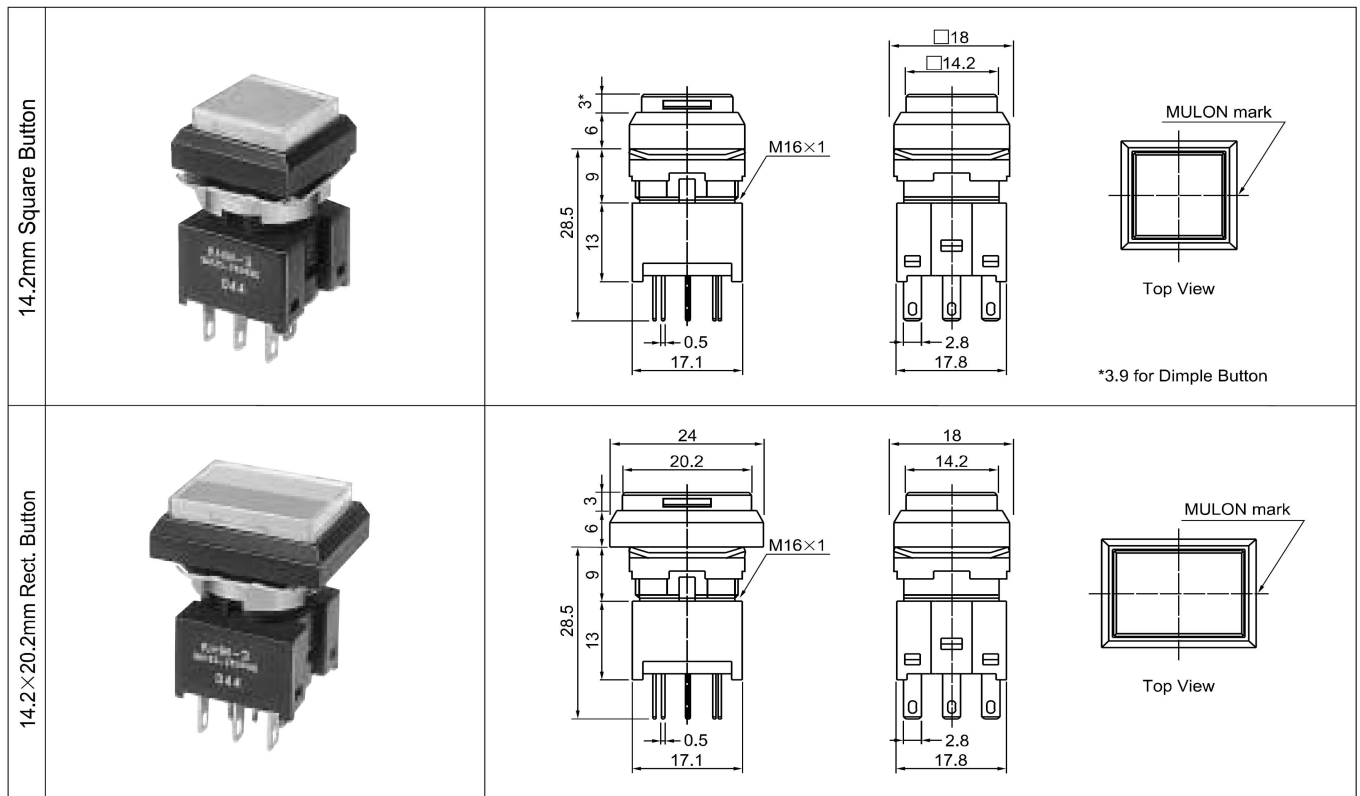
Operating Characteristics

Operating Force (max.)	4.41N	Total Travel (max.)	3mm
------------------------	-------	---------------------	-----

Structure



Dimensions



Tolerance : ±0.4

Internal Connection Arrangements

●LED (Red, Green, Yellow)

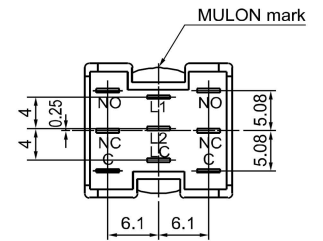
(V)	Full-Face	Dual-Color	Split-Face
LED Full-Face (Square)	5V BOTTOM VIEW TOP VIEW MULON mark MULON mark	MULON mark MULON mark	MULON mark MULON mark
	12V, 24V MULON mark MULON mark	MULON mark MULON mark	*Cannot apply built-in resistor type for 24V. *Please inquire when cathode common type needed.
LED Full-Face (Rectangular)	5V BOTTOM VIEW TOP VIEW MULON mark MULON mark	MULON mark MULON mark	MULON mark MULON mark
	12V, 24V MULON mark MULON mark	MULON mark MULON mark	*Cannot apply built-in resistor type for 24V. *Please inquire when cathode common type needed.

Terminals

●TERMINALS LAYOUT (Square, Rectangular)

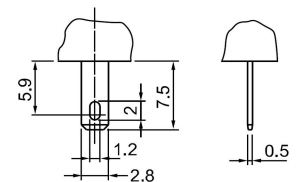
	STDP	DTDP	INDICATOR
Full-Face	BOTTOM VIEW 		
Dual-Color, Split-Face	BOTTOM VIEW 		

● TERMINALS DIMENSIONS (BOTTOM VIEW)



*Full Face type has no L2 terminal.

● TERMINAL SHAPE



110 TAB, Soldering Terminal

Tolerance : ±0.4mm

LED DATA

* Red=R, Yellow=Y, Green=G ,

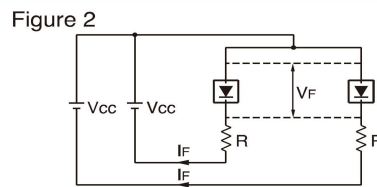
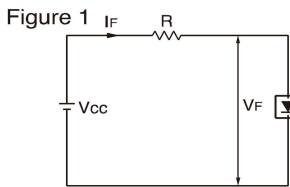
LED RATINGS

DC Supply Voltage (V)	Current Rating (mA)		
	Full-Face	Split-Face	Dual-Color
5 (±5%)	32	16	32
12 (±5%)	16	16	16
24 (±5%)	12		8

EXTERNAL RESISTOR

Switches are normally fitted with internal resistors to operate on 5, 12, 24V DC supply. In case of non-resistor type, suitable external current limiting resistors must be installed as shown by the table and formula.

ITEM	Full-Face						Split-Face			Dual-Color			
	DC5V			DC12V,24V			DC5V,12V,24V			DC5V		DC12V,24V	
	R	G	Y	R	G	Y	R	G	Y	R	G	R	G
Max. operating current I_{FM} (mA)	40	40	40	20	20	20	20	20	20	50	40	25	20
DC reverse voltage V_R (V)	10	10	10	20	20	20	10	10	10	10	10	20	20
Forward voltage V_F (V)	3.6	4.3	4.0	7.1	8.6	8.0	3.6	4.3	4.0	3.8	4.2	7.6	8.4
Recommended operating current I_F (mA)	32	32	32	16	16	16	16	16	16	7	26	4	14
Wiring diagram	Fig. 1						Fig. 2						



The value of the series resistor can be determined by the formula:

$$R = \frac{V_{CC} - V_F}{I_F}$$

V_{CC} : Supply Voltage
 V_F : Forward Voltage
 I_F : Forward Current

Panel Layout / Panel Cut-out Dimensions

14.2mm Square

Panel thickness: 0.5 ~ 3.2mm

	Panel Layout	Panel Cut Dimensions
Without Guard Cover		
With Guard Cover		

14.2×20.2mm Rect. Button

	Panel Layout	Panel Cut Dimensions
Without Guard Cover		
With Guard Cover		

n : number of switches (horizontal) m : number of switches (vertical)

*Panel Cut Dimension should be after panel paintings.

Note : Panel thickness: 0.5~2.2mm for Guard Cover use
Panel thickness: 0.5~2.7mm for Oil and Water-Tight Version

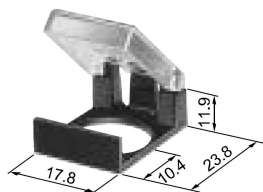
Tolerance : ±0.4mm

Accessories

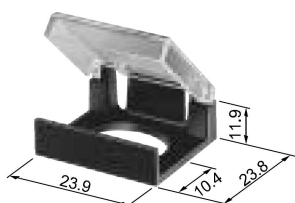
GUARD COVER

Guard Cover prevents inadvertent and unintentional operations.

● 14.2mm Square Button



● 14.2×20.2mm Rect. Button

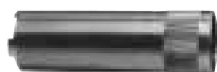


PART NO.		
Color	Squre	Rectangular
Black	KH-1565-K	KH-1566-K
Gray	KH-1565-H	KH-1566-H

*The cover to be opened 90° and stopped.

MOUNTING WRENCH

Recommended tool for mounting KH series.



PART NO.	MH-448
----------	--------

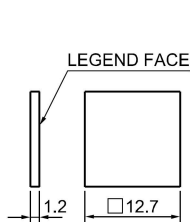
SWITCH UNIT REMOVING TOOL

Recommended for removing switch unit from flange case.

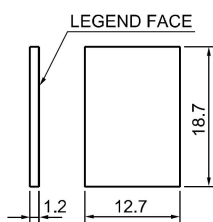


PART NO.	KH-1496
----------	---------

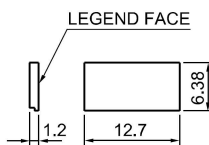
Filter Dimensions



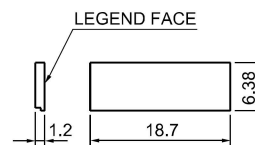
KH-1491



KH-1494



KH-1492



KH-1495

Replacement Parts

● Button

ITEM	PART NO.
Square Button	KH-1490
Rect. Button	KH-1493
Square Dimple Button	KH-1597

● Filter

ITEM	Color	Red	Green	Yellow	Milk-White
Square Full-Face Filter		KH-1491-LR	KH-1491-LG	KH-1491-LY	KH-1491-LM
Rect. Full-Face Filter		KH-1494-LR	KH-1494-LG	KH-1494-LY	KH-1494-LM
Square Split-Face Filter		KH-1492-LR	KH-1492-LG	KH-1492-LY	KH-1492-LM
Rect. Split-Face Filter		KH-1495-LR	KH-1495-LG	KH-1495-LY	KH-1495-LM

● Panel Mounting Washer KH-1473



● Panel Mounting Nut KH-1474



● Rubber Packing for Panel Mounting

KH-1475
(Water-Tight Type)



● Split-Face Divider

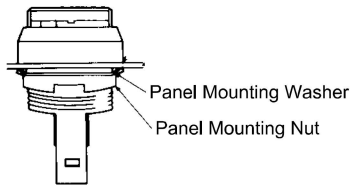
Square Split-Face	KH-1497-1
Rect. Split-Face	KH-1498-1

Tolerance : ±0.4mm

Assembly / Disassembly

1. Mounting Switch

(1) Insert Flange Case from front of panel, and fit the panel mounting washer from rear and tighten mounting nut with mounting wrench (MH-448).

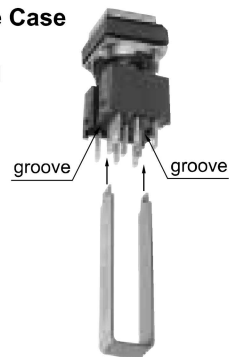


(2) Combine Flange Case and Switch Unit with right direction until click.



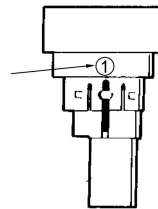
2. Removing Switch Unit from Flange Case with removing tool(KH-1496).

Insert nails into grooves as shown and push in until click. And remove carefully not to break legs of Flange Case.



3. Indicating supply voltage to LED

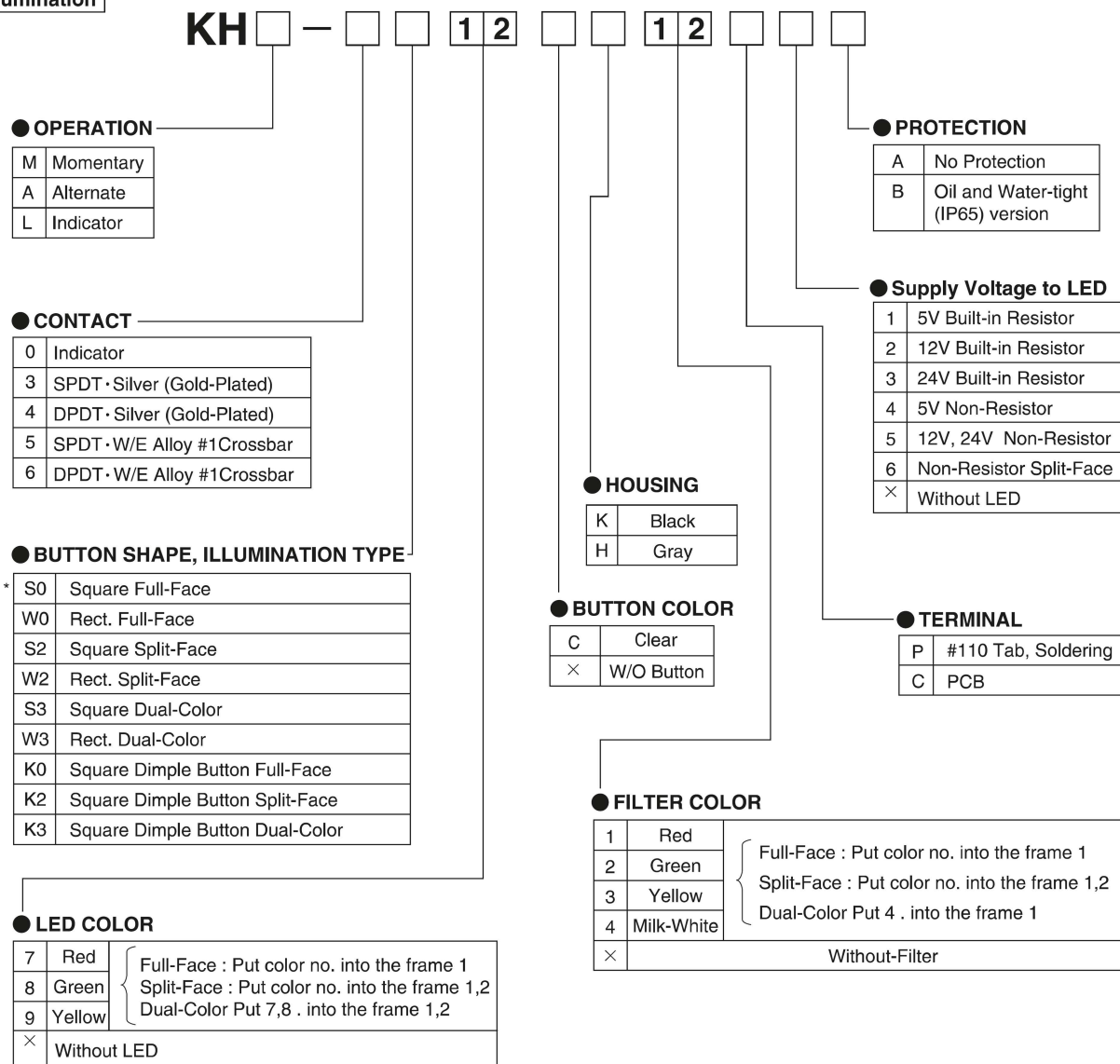
Indicating code number of voltage as shown.



No.	Voltage
1	5V Built-in Resistor
2	12V Built-in Resistor
3	24V Built-in Resistor
4	5V Non-Resistor
5	21V, 24V Non-Resistor
6	Split-Face non resistor
	Without LED

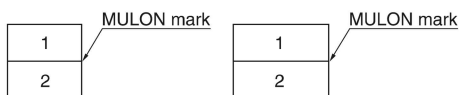
Ordering Code I

LED Illumination



● NOTES

1) In case of Split-Face, LED and Filter color location should be specified as follow.



- 2) In case of Dual-Color, Red and Green combination only, filter color to be Milk-White.
 3) Dimple Button type is only for Square button.
 4) Please be noted that the color of "Yellow" for LED, Filter is actually "Orange Yellow" not Lemon Yellow.

Notes for Split-Face and Dual-Color Illumination type

In case of using Split-Face & Dual-Color, sometimes built-in resistor type cannot be used because of heating. Please note followings:

1. Split-Face

- (1) 5V use : Select 1 (5V built-in resistor). Simultaneous lighting is possible.
 (2) 12V use: Select 2 (12V built-in resistor). However in case of simultaneous lighting, please select 6 (Split-Face non resistor) and apply external resistor accordingly.
 (3) 24V use : Either do or not do simultaneous lighting, cannot select 3 (24V built-in resistor). Please select 6 (Split-Face non resistor) and apply external resistor accordingly. Simultaneous lighting is possible.

2. Dual Color

It is impossible to do simultaneous lighting with all 5V,12V,24V. In case of simultaneous lighting , please select 4,5, respectively and apply external resistor.

Ordering Code II

It is possible to order Light Cartridge, Flange Case, Switch Unit individually.

LIGHT CARTRIDGE

KH —

● BUTTON SHAPE, ILLUMINATION TYPE

S0	Square Full-Face	K0	Dimple B. Sq. Full-Face
W0	Rect. Full-Face	K2	Dimple B. Sq. Split-Face
S2	Square Split-Face	K3	Dimple B. Sq. Dual-Color
W2	Rect. Split-Face		
S3	Square Dual-Color		
W3	Rect. Dual-Color		

● BUTTON COLOR

C	Clear
×	Without Button

● PROTECTION

A	No Protection
B	Oil and Water-tight (IP65) version

● Supply Voltage to LED

1	5V Built-in Resistor
2	12V Built-in Resistor
3	24V Built-in Resistor
4	5V Non-Resistor
5	12V, 24V Non-Resistor
6	Non-Resistor Split-Face
×	Without LED

● FILTER COLOR

1	Red	Full-Face : Put color no. into the frame 1 Split-Face : Put color no. into the frame 1,2 Dual-Color Put 4 . into the frame 1
2	Green	
3	Yellow	
4	Milk-White	
×	Without Filter	

● LED COLOR

7	Red	Full-Face : Put color no. into the frame 1 Split-Face : Put color no. into the frame 1,2 Dual-Color Put 7,8 . into the frame 1,2
8	Green	
9	Yellow	
×	Without LED	

Ordering Code 2

FLANGE CASE

KH —

● OPERATION

S	Momentary or Alternate
L	Indicator

● PROTECTION

A	No Protection
B	Oil and Water-tight (IP65) version

● HOUSING

S	Square
W	Rect.

● HOUSING COLOR

K	Black
H	Gray

SWITCH UNIT

KH —

● OPERATION

M	Momentary
A	Alternate
L	Indicator

● TERMINAL

P	#110 Tab, Soldering
C	PCB

● CONTACT

0	Indicator
3	SPDT· Silver (Gold-Plated)
4	DPDT· Silver (Gold-Plated)
5	SPDT· W/E Alloy #1Crossbar
6	DPDT· W/E Alloy #1Crossbar

● ILLUMINATION TYPE

D	FULL FACE
E	SPLIT FACE, DUAL-COLOR
×	WITHOUT LED