

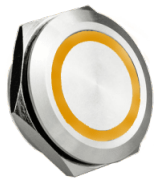
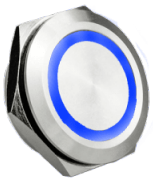


25mm metal panel mount push button switch, with LED illumination

Full technical specifications available upon request\*  
(2D Drawings, 3D files\*, Mechanical & Electrical specifications)  
\*Contact [sales@rjselectronics.com](mailto:sales@rjselectronics.com) / +44 (0) 1234 213600

**SKU:** N/A

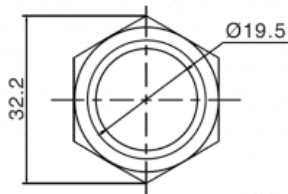
**Categories:** [Metal Switches](#), [25mm](#), [Panel Mount Switches](#), [LED Illuminated Switches](#)



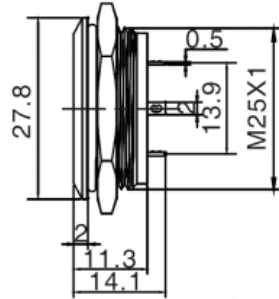
<b>Product Series</b>	RJS1N1LP
<b>Product Type</b>	Switch, Push Button, Tact
<b>Product Function</b>	Momentary Switch
<b>IP Rating</b>	IP67 (front), IP68 (front)
<b>Cutout</b>	25mm
<b>Configuration</b>	1NO (SPST) [push to make]
<b>Mechanical Operations</b>	1,000,000
<b>Electrical Operations</b>	200,000
<b>Cap/Actuator Shape</b>	Flat, Round
<b>Bezel Shape</b>	Chamfered, Round
<b>Colour / Material</b>	Brushed Steel, Anodised Aluminium, Black
<b>Illumination</b>	Ring
<b>Single LED options</b>	Red, Green, Blue, Orange (Amber), Yellow, White

## Dimensions (measurements in mm unless specified otherwise)

Top View



Side View



Suggested Panel Cut-out

