



19mm metal panel mount push button switch, with no LED illumination

Full technical specifications available upon request*
(2D Drawings, 3D files*, Mechanical & Electrical specifications)
*Contact sales@rjselectronics.com / +44 (0) 1234 213600

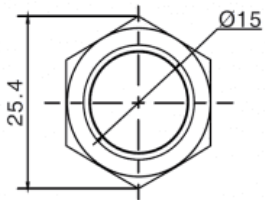
SKU: N/A

Categories: [Metal Switches](#), [19mm](#), [Panel Mount Switches](#), [Non Illuminated Switches](#)

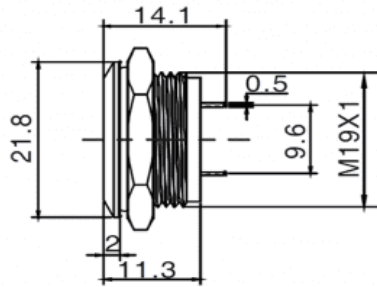
Product Series	RJS1N1LP
Product Type	Switch, Push Button, Tact
Product Function	Momentary Switch
IP Rating	IP67 (front), IP68 (front)
Cutout	19mm
Configuration	1NO (SPST) [push to make]
Mechanical Operations	1,000,000
Electrical Operations	200,000
Cap/Actuator Shape	Flat, Round
Bezel Shape	Chamfered, Round
Colour / Material	Brushed Steel, Anodised Aluminium, Black
Illumination	No Illumination
Single LED options	Without LED

Dimensions (measurements in mm unless specified otherwise)

Top View



Side View



Suggested Panel Cut-out

