

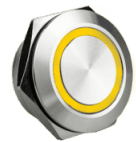


19mm metal panel mount push button switch, with LED illumination

Full technical specifications available upon request*
(2D Drawings, 3D files*, Mechanical & Electrical specifications)
*Contact sales@rjselectronics.com / +44 (0) 1234 213600

SKU: N/A

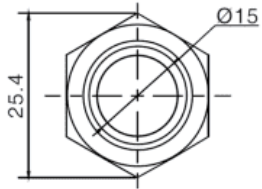
Categories: [Metal Switches](#), [19mm](#), [Panel Mount Switches](#), [LED Illuminated Switches](#)



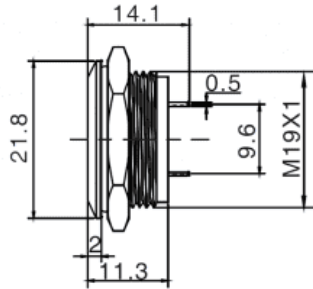
Product Series	RJS1N1LP
Product Type	Switch, Push Button, Tact
Product Function	Momentary Switch
IP Rating	IP67 (front), IP68 (front)
Cutout	19mm
Configuration	1NO (SPST) [push to make]
Mechanical Operations	1,000,000
Electrical Operations	200,000
Cap/Actuator Shape	Flat, Round
Bezel Shape	Chamfered, Round
Colour / Material	Brushed Steel, Anodised Aluminium, Black
Illumination	Ring
Single LED options	Red, Green, Blue, Orange (Amber), Yellow, White

Dimensions (measurements in mm unless specified otherwise)

Top View



Side View



Suggested Panel Cut-out

