

Full technical specifications available upon request*
 (2D Drawings, 3D files*, Mechanical & Electrical specifications)
 *Contact sales@rjselectronics.com / +44 (0) 1234 213600

SKU: N/A

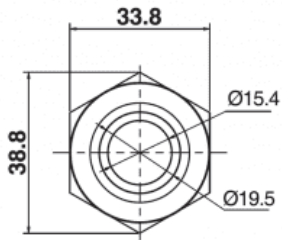
Categories: [Metal Switches](#), [30mm](#), [LED Illuminated Switches](#)



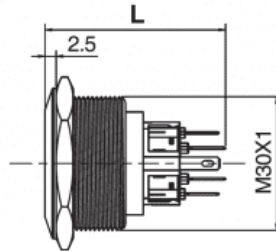
Product Type	Push Button
Product Function	Momentary Switch, Latching (Alternate) Switch, LED Indicator
IP Rating	IP67 (front)
Configuration	1NO1NC (SPDT), 2NO2NC (DPDT)
Terminal Options	Solder Lug Terminals, Pushfit Connector
Illumination	Ring
Colour / Material	Black (Anodised Aluminium), Brushed Steel
Cutout	30mm
Cap/Actuator Shape	Round

Dimensions (measurements in mm unless specified otherwise)

Top View



Side View



L: J30 40.6mm
J30 42.25mm

Suggested Panel Cut-out

